

COLUMBIA PAINT PALETTE

You may use any brand of paint as long as it matches the color associated with the Sherwin Williams paint identification number listed. The color depicted on your screen or printed from your printer is an inaccurate representation of the approved color. Colors that do not match the Sherwin Williams color as reflected in the paint identification number are not approved and will be considered a violation of the paint application. CHBIOA is not responsible for inaccurate color choices. Please visit your local paint store to request and compare paint chips, brush outs, and/or samples of paint colors with the approved Sherwin Williams colors.

*Exterior Colors
Adopted 2023;
Converted to
Sherwin Williams
2024.*

DEAR COLUMBIA HOMEOWNER:

We are pleased to present the new paint palette. The objective of a new palette is to:

- ☐ provide updated colors and schemes with more choices,
- ☐ maintain a harmonious and appealing blend of colors for the neighborhood, and
- ☐ ensure an expedient application approval

There are 18 main body color options. We realize color is a personal preference so we tried to cover the main color families (tan, gray, green, and blue) with a variety of values (ranging light to dark).

PROCESS GOING FORWARD

Exceptions

Colors shown in the new palette are the only colors approved for Columbia. There will not be any exceptions approved by the Board of Directors.

Adjacent Homes

Neighboring homes (side-by-side or directly across the street) shall not be the same palette scheme (body color).

Existing Home Color

Repainting your home can be done so only with the colors in the new palette.

Repainting an existing color (if it is not in the palette) is no longer an option.

WE APPRECIATE YOUR PATIENCE AND UNDERSTANDING AS WE CONTINUE TO MAINTAIN THE APPEARANCE OF OUR HOMES IN COLUMBIA - *OUR* NEIGHBORHOOD.

Sincerely,

Columbia Board of Directors and Columbia Project Architectural Committee

TIPS ON COLOR SELECTION

FIXED ELEMENTS OF THE HOUSE

You will need to work around the fixed elements of your home which are the roof tile and stone work.

CHOOSE A COLOR THAT COMPLEMENTS YOUR ROOF TYPE

- ☐ A roof can compromise more than 50% of the entire color scheme on some homes
- ☐ Columbia roof tiles are either charcoal gray (cool) or dark brown/tan (warm)

CHOOSE A COLOR THAT COMPLEMENTS THE STONE, BRICK, OR SLATE SIDING ETC.

- ☐ Brick: you may want to lean towards a warm color to complement this tone
- ☐ Gray slate: you may want to lean toward a cool color to complement this tone

WORKING WITH THE COLUMBIA PAINT PALETTE

Viewing the colors online is for a general visualization. It is not for color accuracy.

SHERWIN WILLIAMS STORE & WEBSITE

- ☐ Visit the Sherwin Williams store at 801 Marina Village Parkway, Alameda, for paint chips, brush outs, and/or paint sample cans. Visit their website, sherwin-williams.com.

PALETTE BINDER IN COMMUNITY OFFICE

- ☐ Use a blank sheet of paper to isolate or frame the accent color of your chase from the other accent colors.

APPLICATION PROCESS

SUBMIT APPLICATION

- ☐ Complete and submit application to Community Architecture Administrator.
- ☐ Work may NOT commence until you receive Condition of Approval Letter.
- ☐ Any brand of paint may be used provided colors match Sherwin Williams colors in this palette. Other brands selected shall have the same characteristics regardless of manufacturer.

APPLICATION REVIEW

- ☐ Application reviewed for completeness and compliance by Architectural Administrator.
- ☐ Application distributed to Community and Project Architectural Committees (CAC and PAC).
- ☐ Neighbors affected by proposed improvements receive a 10-day period to comment on the plan.
- ☐ Potential site inspections by CAC and/or PAC members.

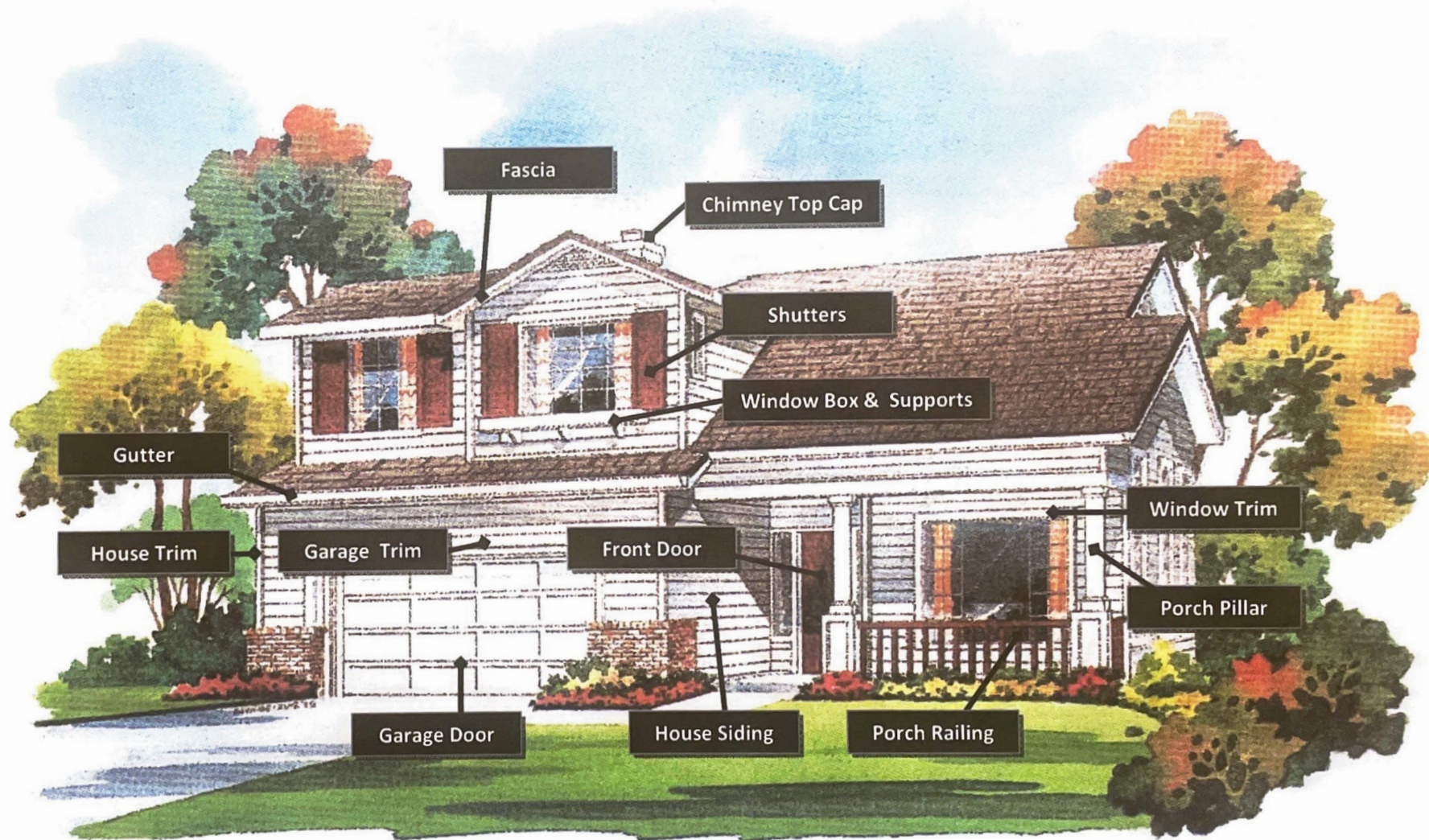
APPROVAL

- ☐ Condition of Approval Letter mailed to homeowner with painting rules and guidelines.
- ☐ Provide your contractor with a copy of the approval letter to ensure compliance.
- ☐ Changes shall NOT be made in the color scheme after receiving approval letter unless changes are resubmitted on a new application and receive approval.

FINAL INSPECTION

- ☐ Approved application valid for one year - final inspection of completed work must be requested.
- ☐ If work is not complete and final inspection is not approved within one year, application will be voided.
- ☐ Applicant will receive a letter indicating whether work was approved or disapproved.
- ☐ If approved, application file will be closed. If not approved, the letter will specify the remedy required.

COLUMBIA HOA



ARCHITECTURAL FEATURES PAINTING GUIDELINES

You must choose a BODY color, a TRIM color, and an ACCENT color. The following areas of the home exterior are to be painted in the color categories shown below. For "Trim or Accent Color" section, you must specify which colors for each one on the Architectural Application.

BODY COLOR

House Siding
Garage Door
Chimney Siding
Chimney Trim
Downspouts *
Exterior Utility Doors & Trim
Security Alarm Box
(Raw metal of alarm box painted to match surface to which it is attached. Alarm boxes should be painted if rust is evident. Leave decal area unpainted.)

FLAT, LOW SHEEN, OR SATIN

TRIM COLOR

House Trim
Window Trim
Front Door Trim
Garage Door Trim
Porch Posts/Pillars
Balcony Top Horizontal Rail
Balcony Vertical Railing
Balcony Door (on waterfront houses)
Chimney Top Cap Trim
Downspouts *

LOW SHEEN, SATIN, OR EGGSHELL

TRIM OR ACCENT COLOR

Fascia (refer to scheme if accent color is acceptable in this area)
Window Box and Supports
Porch Vertical/Horizontal Railing
Gutters

SATIN OR EGGSHELL

Specify Trim or Accent for each on Application

ACCENT COLOR

Shutters
Downspouts *

SATIN OR EGGSHELL

Front Door

SATIN, EGGSHELL, OR SEMI-GLOSS

NON-ARCHITECTURAL FEATURES

Roof Vents and Other Roof Elements (must match roof tile color)	RUST RETARDANT
---	----------------

FENCE & GATE

Shall not be painted. Other yard structures (e.g. arbors, overhangs, gazebos, etc.) shall not be painted unless specifically approved by the Columbia Architectural Committee.

Note: * Downspouts should be painted the color of the surface to which it is attached (body, trim, or accent color). In some areas, it may be two colors.

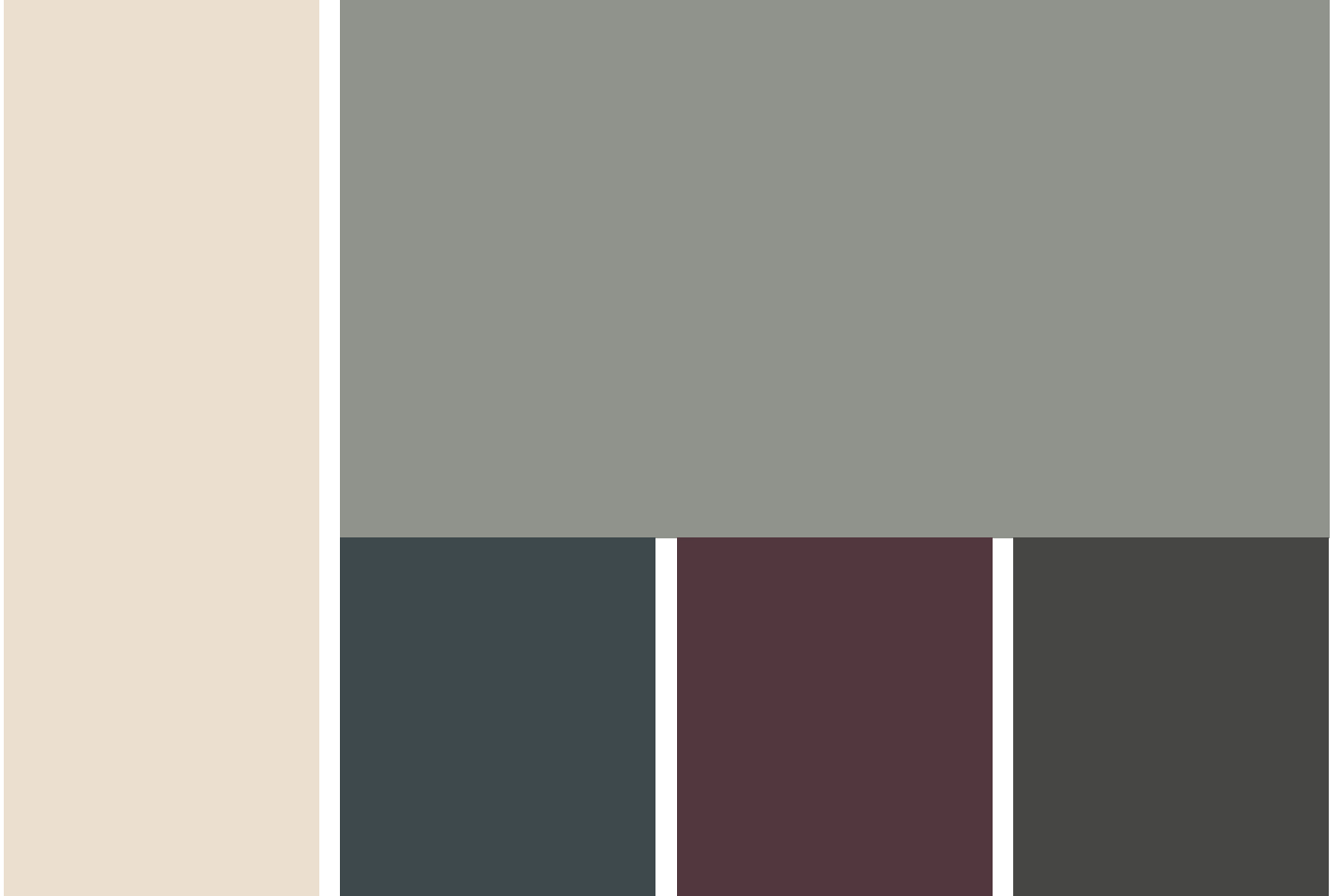
SHARE THESE GUIDELINES WITH YOUR PAINT CONTRACTOR

COLUMBIA HOA

SCHEME 1

Body

Illusive Green SW9164



Trim

Steamed Milk SW7554

1

2

3

Accent Options (choose one):

1. Mount Etna SW7625
2. Merlot SW2704 *
3. Iron Ore SW7069

* Not permitted on fascia

Sherwin paints are produced to match the color chip as accurately as possible; however, variations in types of products, gloss, texture, lighting and adjacent colors can cause a difference in appearance between the color of the chip and the color of the applied paint. Critical color matches should be applied to the building, allowed to dry, and checked before proceeding with the entire job.

COLUMBIA HOA

SCHEME 2

Body

Evergreen Fog SW9130



Trim

Pearly White SW7009

1

2

3

Accent Options (choose one):

1. Jasper SW6216
2. Merlot SW2704 *
3. Roycroft Bronze Green SW2846

* Not permitted on fascia

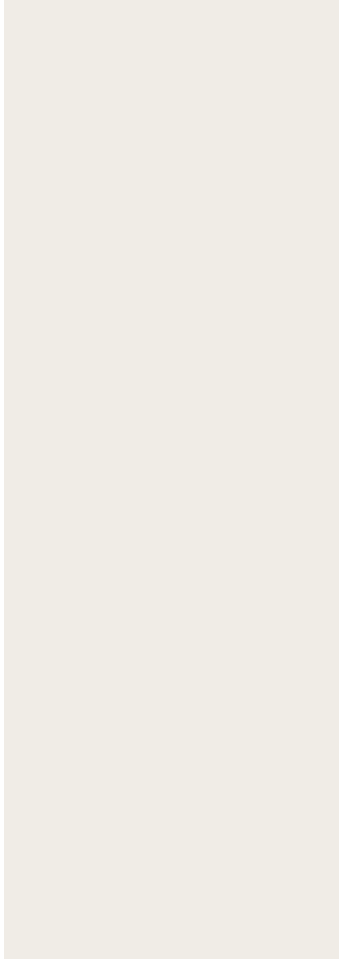
Sherwin paints are produced to match the color chip as accurately as possible; however, variations in types of products, gloss, texture, lighting and adjacent colors can cause a difference in appearance between the color of the chip and the color of the applied paint. Critical color matches should be applied to the building, allowed to dry, and checked before proceeding with the entire job.

COLUMBIA HOA

SCHEME 3

Body

Thunderous SW6201



Trim

Pure White SW7005



1

2

Accent Options (choose one):

1. Black Swan SW6279
2. Sommelier SW7595 *

* Not permitted on fascia

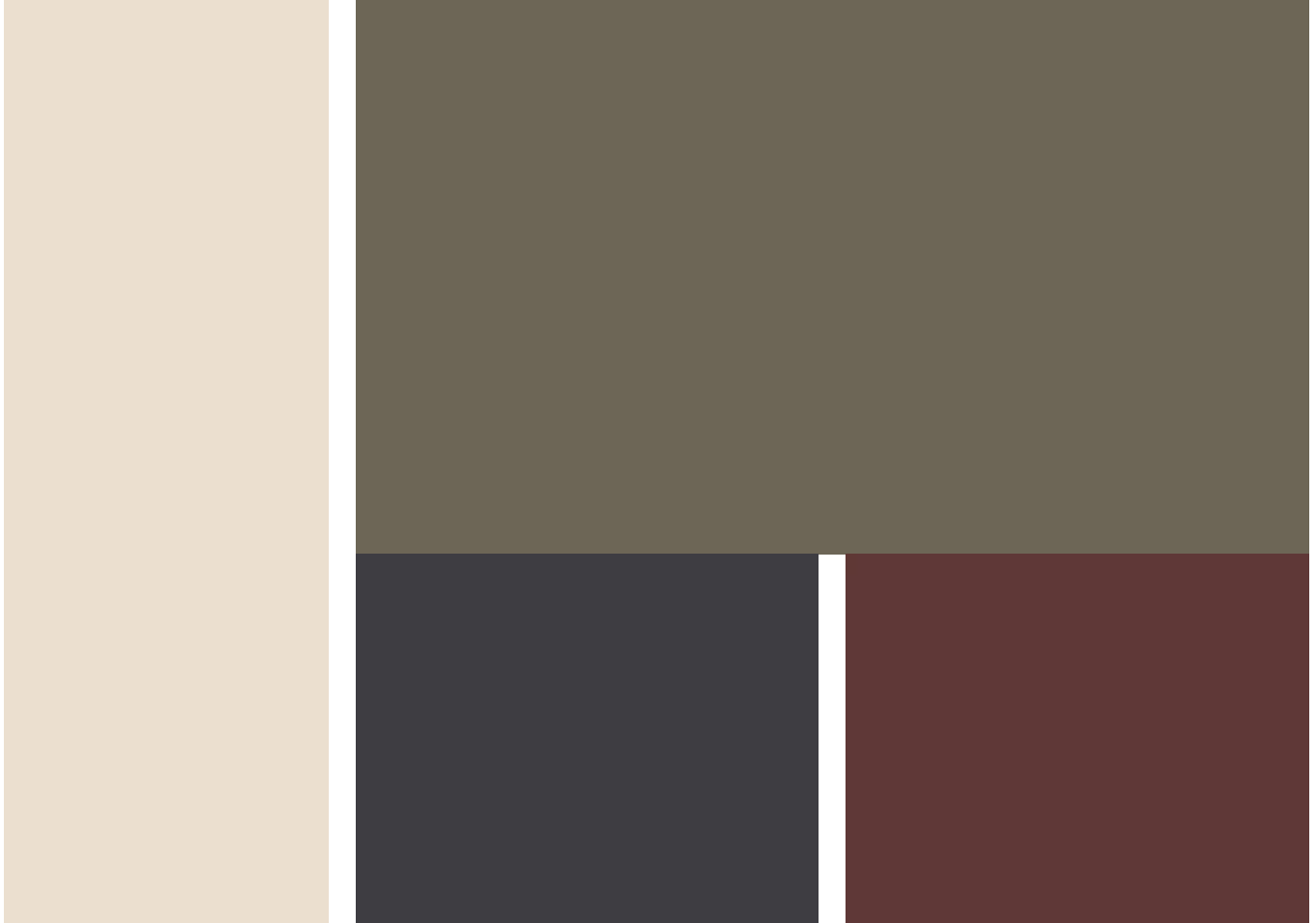
Sherwin paints are produced to match the color chip as accurately as possible; however, variations in types of products, gloss, texture, lighting and adjacent colors can cause a difference in appearance between the color of the chip and the color of the applied paint. Critical color matches should be applied to the building, allowed to dry, and checked before proceeding with the entire job.

COLUMBIA HOA

SCHEME 4

Body

Eclipse SW6166



Trim

Steamed Milk SW7554

1

2

Accent Options (choose one):

1. Black Swan SW6279
2. Sommelier SW7595 *

* Not permitted on fascia

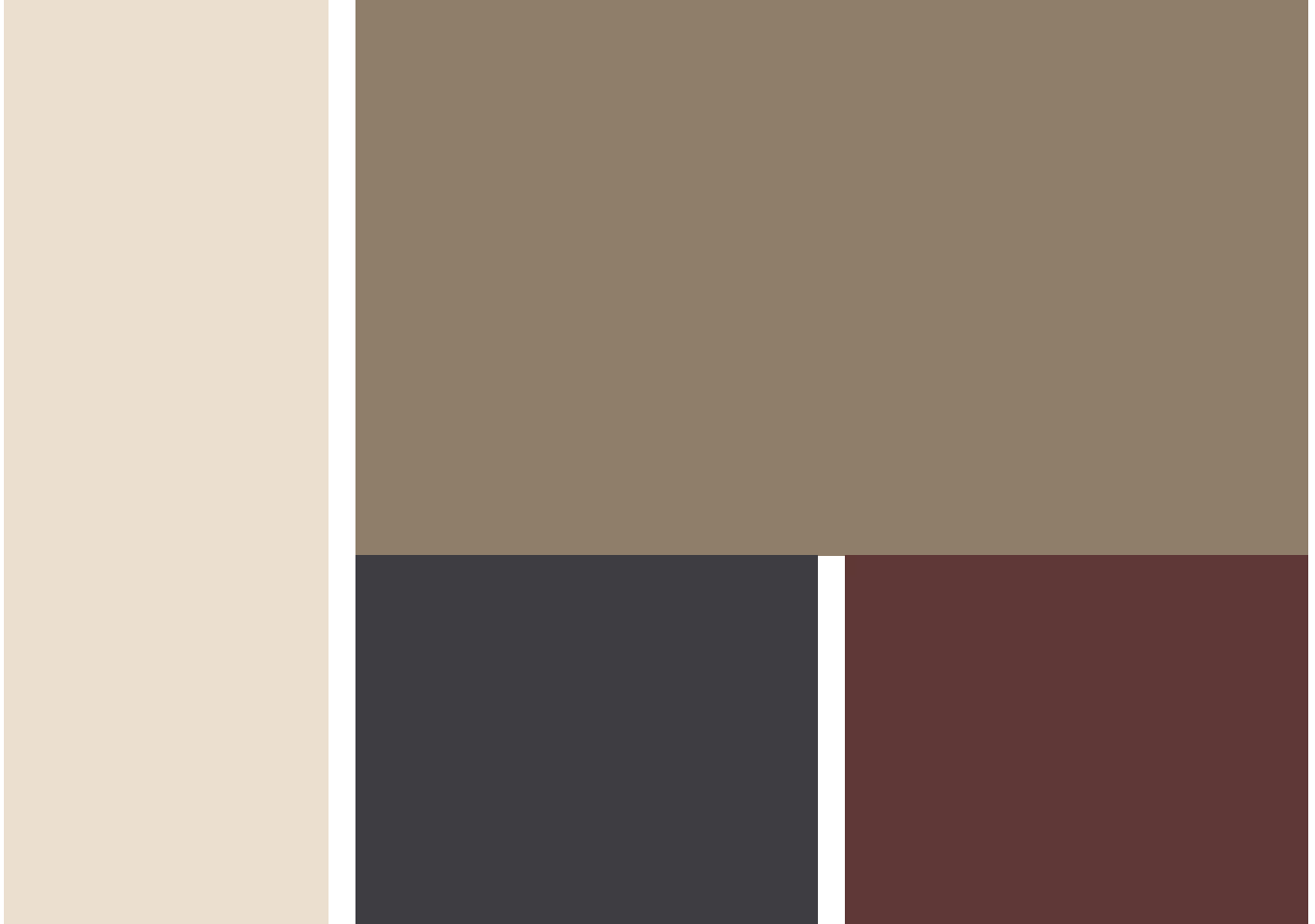
Sherwin paints are produced to match the color chip as accurately as possible; however, variations in types of products, gloss, texture, lighting and adjacent colors can cause a difference in appearance between the color of the chip and the color of the applied paint. Critical color matches should be applied to the building, allowed to dry, and checked before proceeding with the entire job.

COLUMBIA HOA

SCHEME 5

Body

Quiver Tan SW6151



Trim

Steamed Milk SW7554

1

2

Accent Options (choose one):

1. Black Swan SW6279
2. Sommelier SW7595 *

* Not permitted on fascia

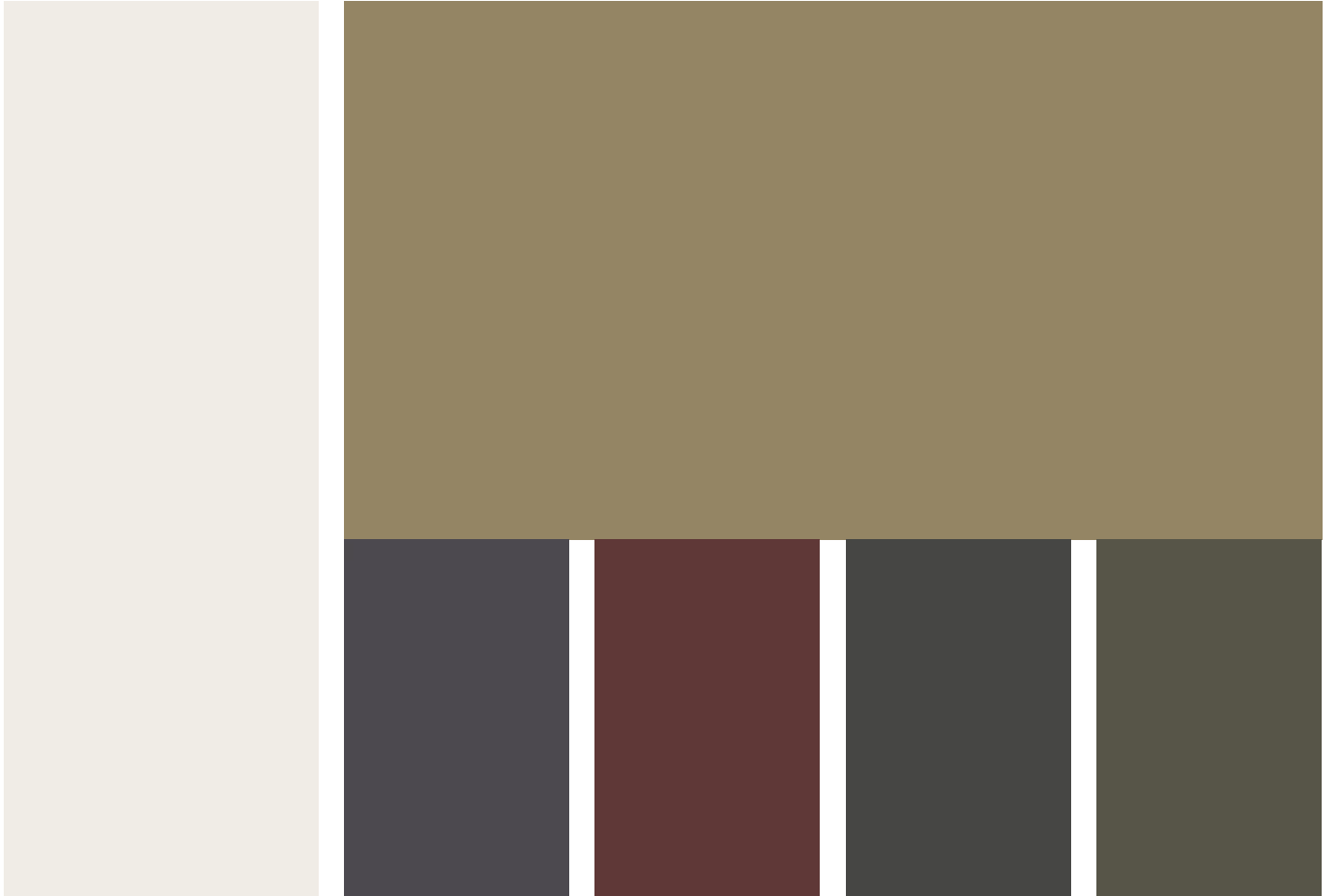
Sherwin paints are produced to match the color chip as accurately as possible; however, variations in types of products, gloss, texture, lighting and adjacent colors can cause a difference in appearance between the color of the chip and the color of the applied paint. Critical color matches should be applied to the building, allowed to dry, and checked before proceeding with the entire job.

COLUMBIA HOA

SCHEME 6

Body

Renwick Olive SW2815



Trim

Pure White SW7005

1

2

3

4

Accent Options (choose one):

1. Perle Noir SW9154
2. Sommelier SW7595 *
3. Iron Ore SW7069
4. Roycroft Broze Green SW2846

* Not permitted on fascia

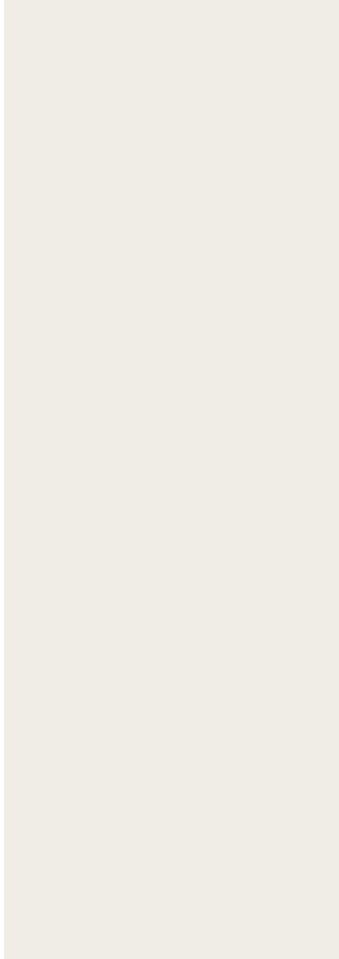
Sherwin paints are produced to match the color chip as accurately as possible; however, variations in types of products, gloss, texture, lighting and adjacent colors can cause a difference in appearance between the color of the chip and the color of the applied paint. Critical color matches should be applied to the building, allowed to dry, and checked before proceeding with the entire job.

COLUMBIA HOA

SCHEME 7

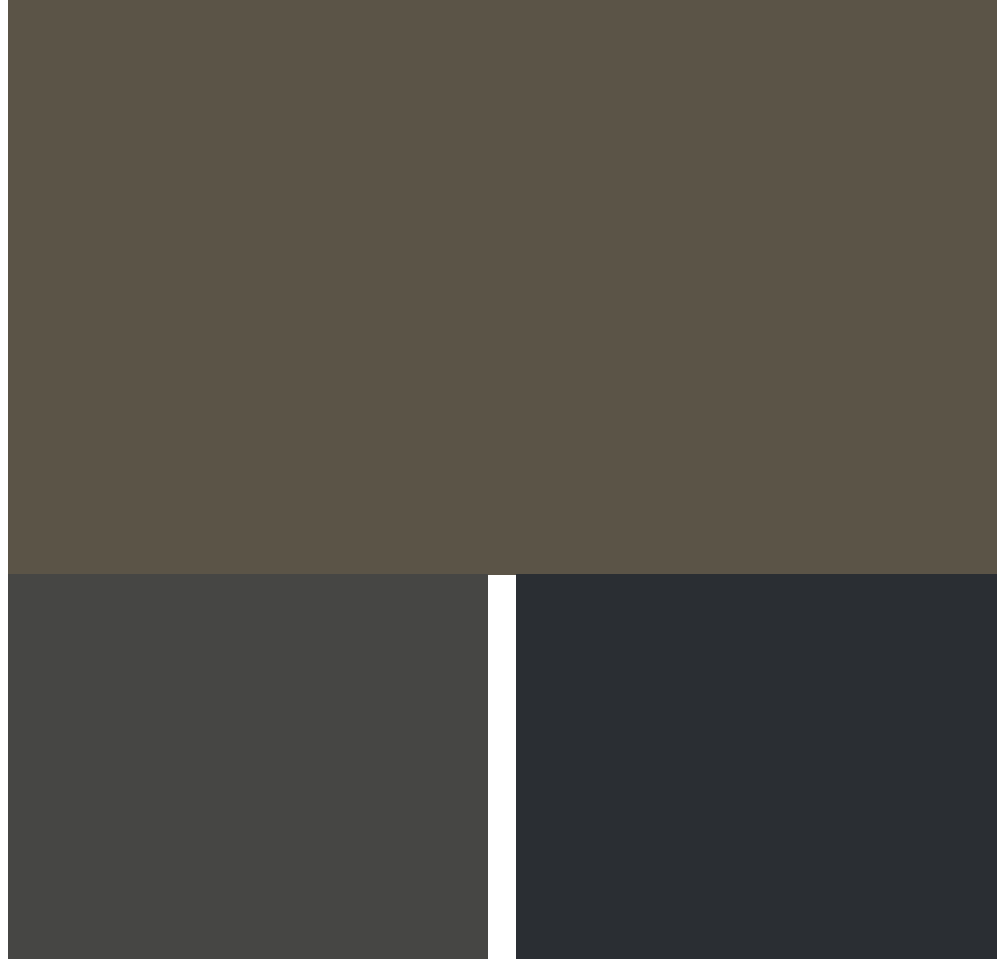
Body

Muddled Basil SW7745



Trim

Pure White SW7005



1

2

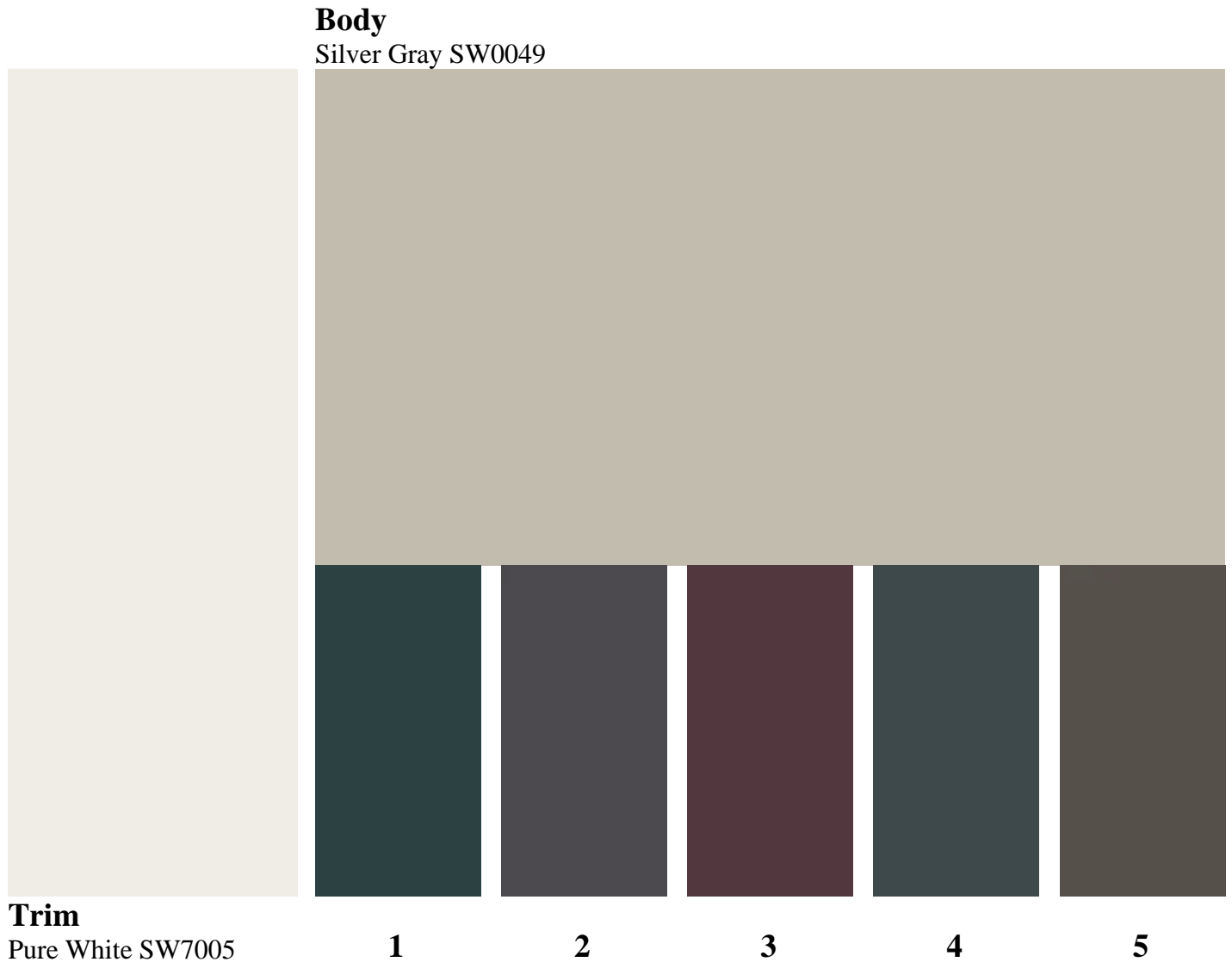
Accent Options (choose one):

1. Iron Ore SW7069
2. Black of Night SW6993

Sherwin paints are produced to match the color chip as accurately as possible; however, variations in types of products, gloss, texture, lighting and adjacent colors can cause a difference in appearance between the color of the chip and the color of the applied paint. Critical color matches should be applied to the building, allowed to dry, and checked before proceeding with the entire job.

COLUMBIA HOA

SCHEME 8



Accent Options (choose one):

1. Cascades SW7623
2. Perle Noir SW9154 *
3. Merlot SW2704 *
4. Mount Etna SW7625
5. Urbane Bronze SW7048

* Not permitted on fascia

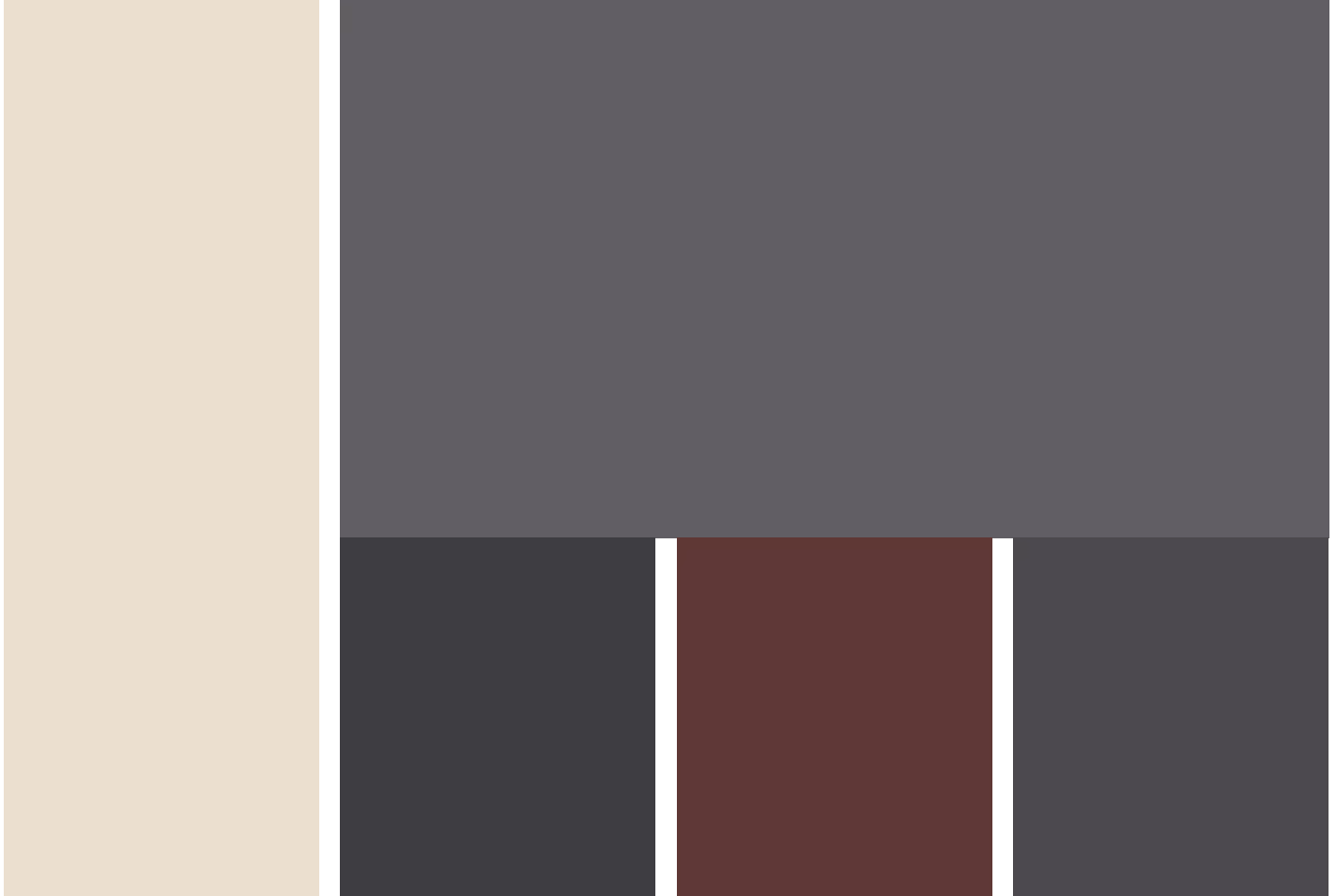
Sherwin paints are produced to match the color chip as accurately as possible; however, variations in types of products, gloss, texture, lighting and adjacent colors can cause a difference in appearance between the color of the chip and the color of the applied paint. Critical color matches should be applied to the building, allowed to dry, and checked before proceeding with the entire job.

COLUMBIA HOA

SCHEME 9

Body

Cloak Gray SW6278



Trim

Steamed Milk SW7554

1

2

3

Accent Options (choose one):

1. Black Swan SW6279
2. Sommelier SW7595 *
3. Perle Noire SW9154 *

* Not permitted on fascia

Sherwin paints are produced to match the color chip as accurately as possible; however, variations in types of products, gloss, texture, lighting and adjacent colors can cause a difference in appearance between the color of the chip and the color of the applied paint. Critical color matches should be applied to the building, allowed to dry, and checked before proceeding with the entire job.

COLUMBIA HOA

SCHEME 10

Body

Homberg Gray SW7622



Trim

Steamed Milk SW7554

1

2

3

Accent Options (choose one):

1. Black Swan SW6279
2. Sommelier SW7595 *
3. Cascades SW7623

* Not permitted on fascia

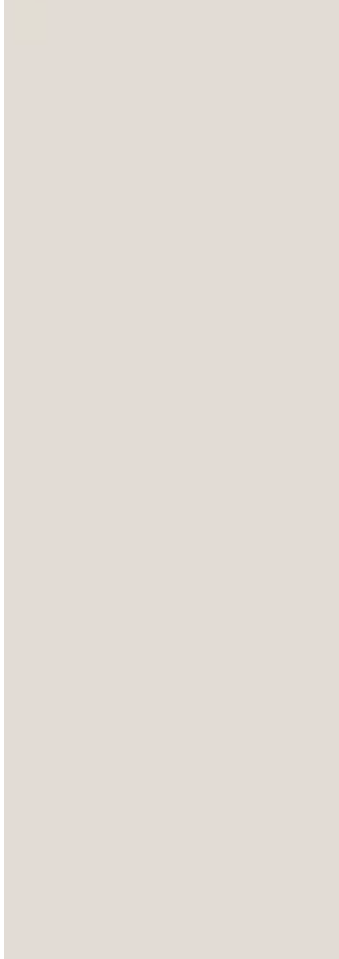
Sherwin paints are produced to match the color chip as accurately as possible; however, variations in types of products, gloss, texture, lighting and adjacent colors can cause a difference in appearance between the color of the chip and the color of the applied paint. Critical color matches should be applied to the building, allowed to dry, and checked before proceeding with the entire job.

COLUMBIA HOA

SCHEME 11

Body

Dustblu SW9161



Trim

Eider White SW7014



1

2

Accent Options (choose one):

1. In The Navy SW9178
2. Gibraltar SW6257 *

* Not permitted on fascia

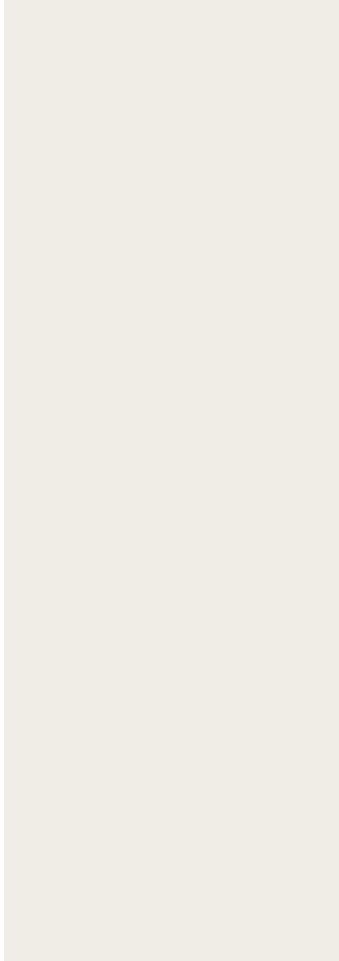
Sherwin paints are produced to match the color chip as accurately as possible; however, variations in types of products, gloss, texture, lighting and adjacent colors can cause a difference in appearance between the color of the chip and the color of the applied paint. Critical color matches should be applied to the building, allowed to dry, and checked before proceeding with the entire job.

COLUMBIA HOA

SCHEME 12

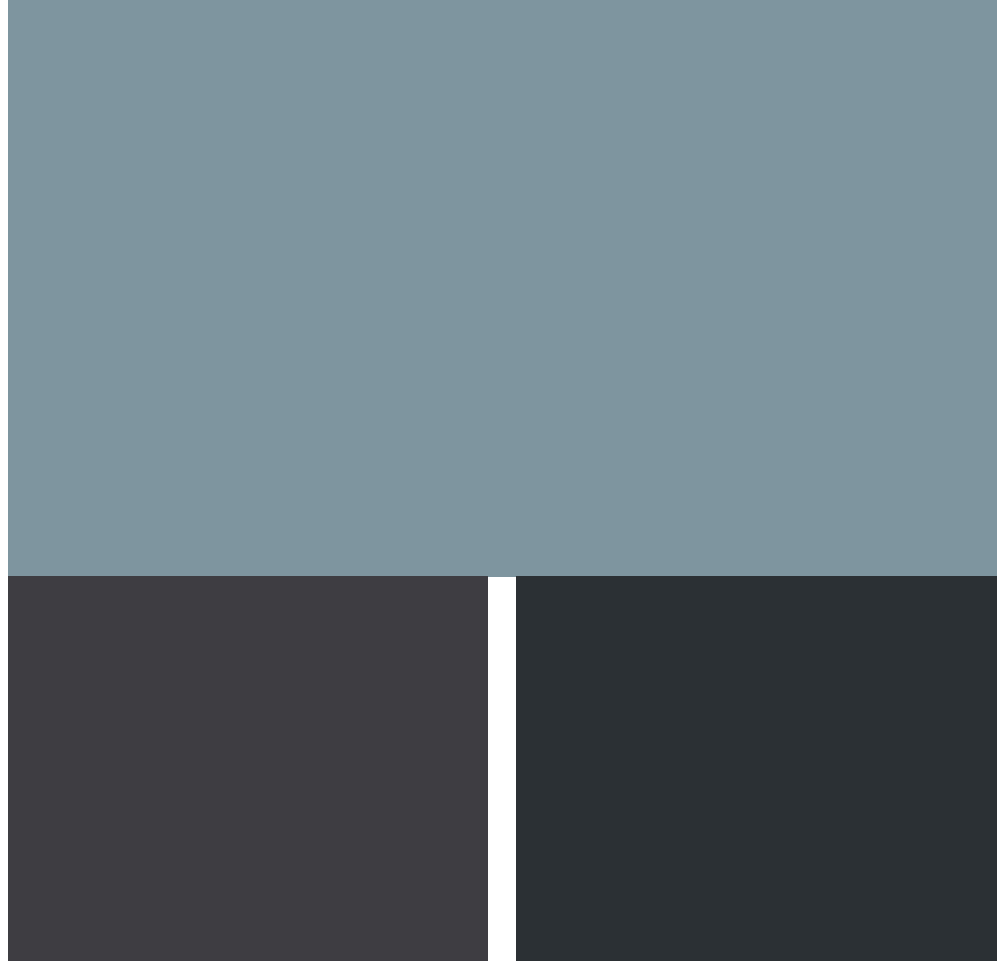
Body

Poolhouse SW7603



Trim

Pure White SW7005



1

2

Accent Options (choose one):

1. Black Swan SW6279
2. Inkwell SW6992

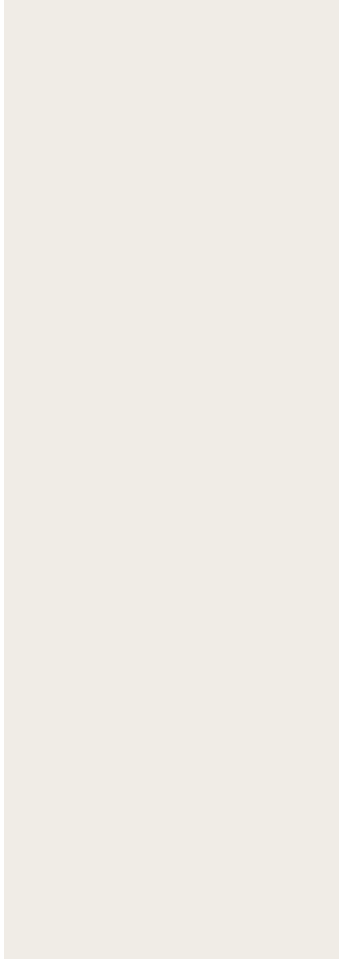
Sherwin paints are produced to match the color chip as accurately as possible; however, variations in types of products, gloss, texture, lighting and adjacent colors can cause a difference in appearance between the color of the chip and the color of the applied paint. Critical color matches should be applied to the building, allowed to dry, and checked before proceeding with the entire job.

COLUMBIA HOA

SCHEME 13

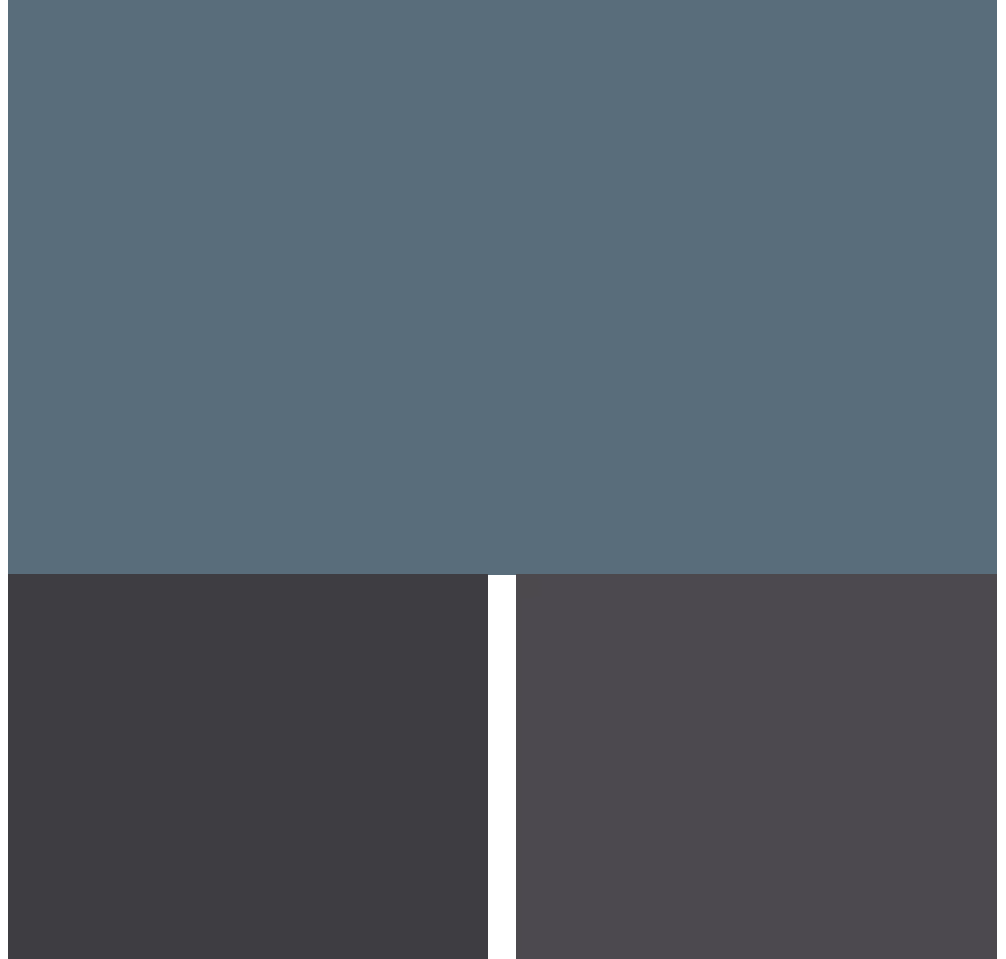
Body

Smokey Blue SW7604



Trim

Pure White SW7005



1

2

Accent Options (choose one):

1. Black Swan SW6279
2. Perle Noire SW9154

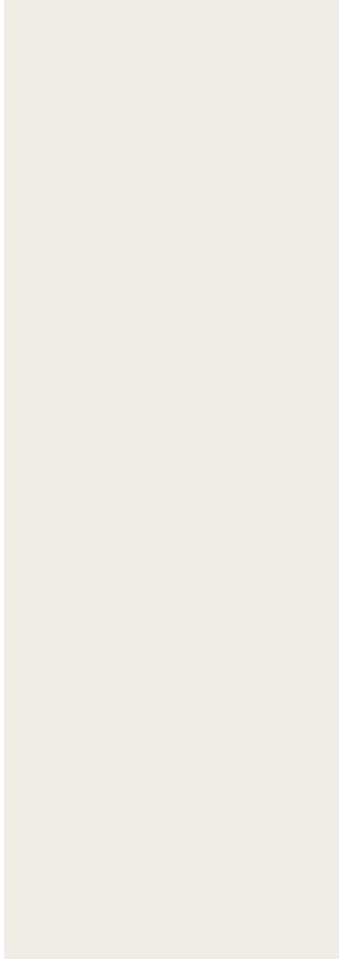
Sherwin paints are produced to match the color chip as accurately as possible; however, variations in types of products, gloss, texture, lighting and adjacent colors can cause a difference in appearance between the color of the chip and the color of the applied paint. Critical color matches should be applied to the building, allowed to dry, and checked before proceeding with the entire job.

COLUMBIA HOA

SCHEME 14

Body

Essential Gray SW 6002



Trim

Pure White SW7005



1



2

Accent Options (choose one):

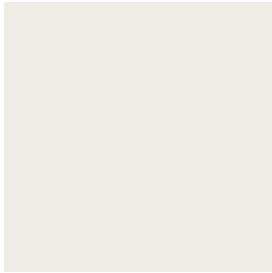
1. Black Swan SW6279
2. Sommelier SW7595*

* Not permitted on fascia

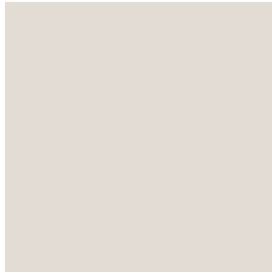
Sherwin paints are produced to match the color chip as accurately as possible; however, variations in types of products, gloss, texture, lighting and adjacent colors can cause a difference in appearance between the color of the chip and the color of the applied paint. Critical color matches should be applied to the building, allowed to dry, and checked before proceeding with the entire job.

COLUMBIA HOA

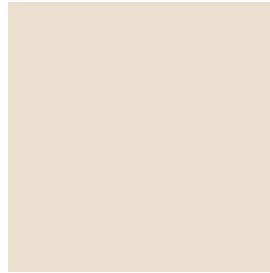
TRIM COLORS



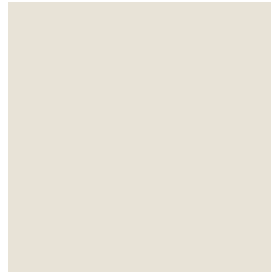
Pure White



Eider White

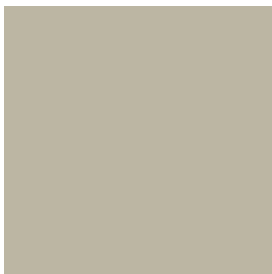


Steamed Milk



Pearly White

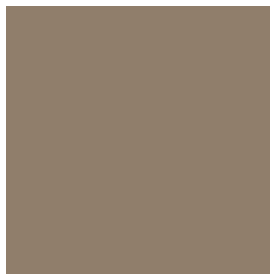
BODY COLORS - GRAYS & BROWNS



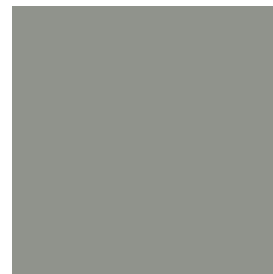
Silver Gray



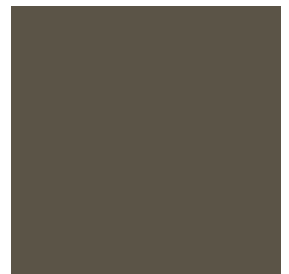
Cloak Gray



Quiver Tan

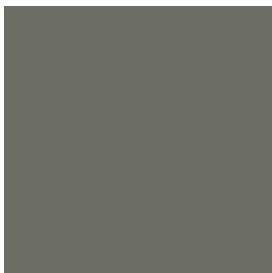


Illusive Green



Muddled Basil

BODY COLORS - GREENS



Thunderous



Eclipse



Renwick Olive



Homberg Gray



Evergreen Fog

BODY COLORS - BLUES



Dustblu



Poolhouse



Smokey Blue

Sherwin paints are produced to match the color chip as accurately as possible; however, variations in types of products, gloss, texture, lighting and adjacent colors can cause a difference in appearance between the color of the chip and the color of the applied paint. Critical color matches should be applied to the building, allowed to dry, and checked before proceeding with the entire job.

COLUMBIA HOA

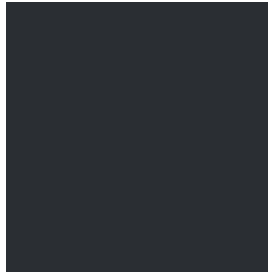
ACCENT COLORS



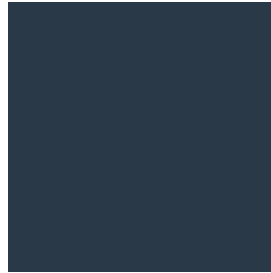
Black Swan



Perle Noire



Black of Night



In The Navy



Sommelier



Cascades



Merlot



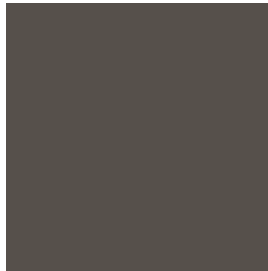
Mount Etna



Iron Ore



Roycroft Broze Green



Urbane Bronze



Gibraltar

FINISHES

Flat

Low Sheen

Satin

Sherwin paints are produced to match the color chip as accurately as possible; however, variations in types of products, gloss, texture, lighting and adjacent colors can cause a difference in appearance between the color of the chip and the color of the applied paint. Critical color matches should be applied to the building, allowed to dry, and checked before proceeding with the entire job.