

BAYVIEW HARBOR PAINT PALETTE

You may use any brand of paint as long as it matches the color associated with the Kelly Moore paint identification number listed. The color depicted on your screen or printed from your printer is an inaccurate representation of the approved color. Colors that do not match the Kelly Moore color as reflected in the paint identification number are not approved and will be considered a violation of the paint application. CHBIOA is not responsible for inaccurate color choices. Please visit your local paint store to request and compare paint chips, brush outs, and/or samples of paint colors with the approved Kelly Moore colors.

*Exterior Colors
Adopted 2010*

SUGGESTIONS FOR PAINT PREPARATION AND REPAINTING THE EXTERIOR YOUR HOME:

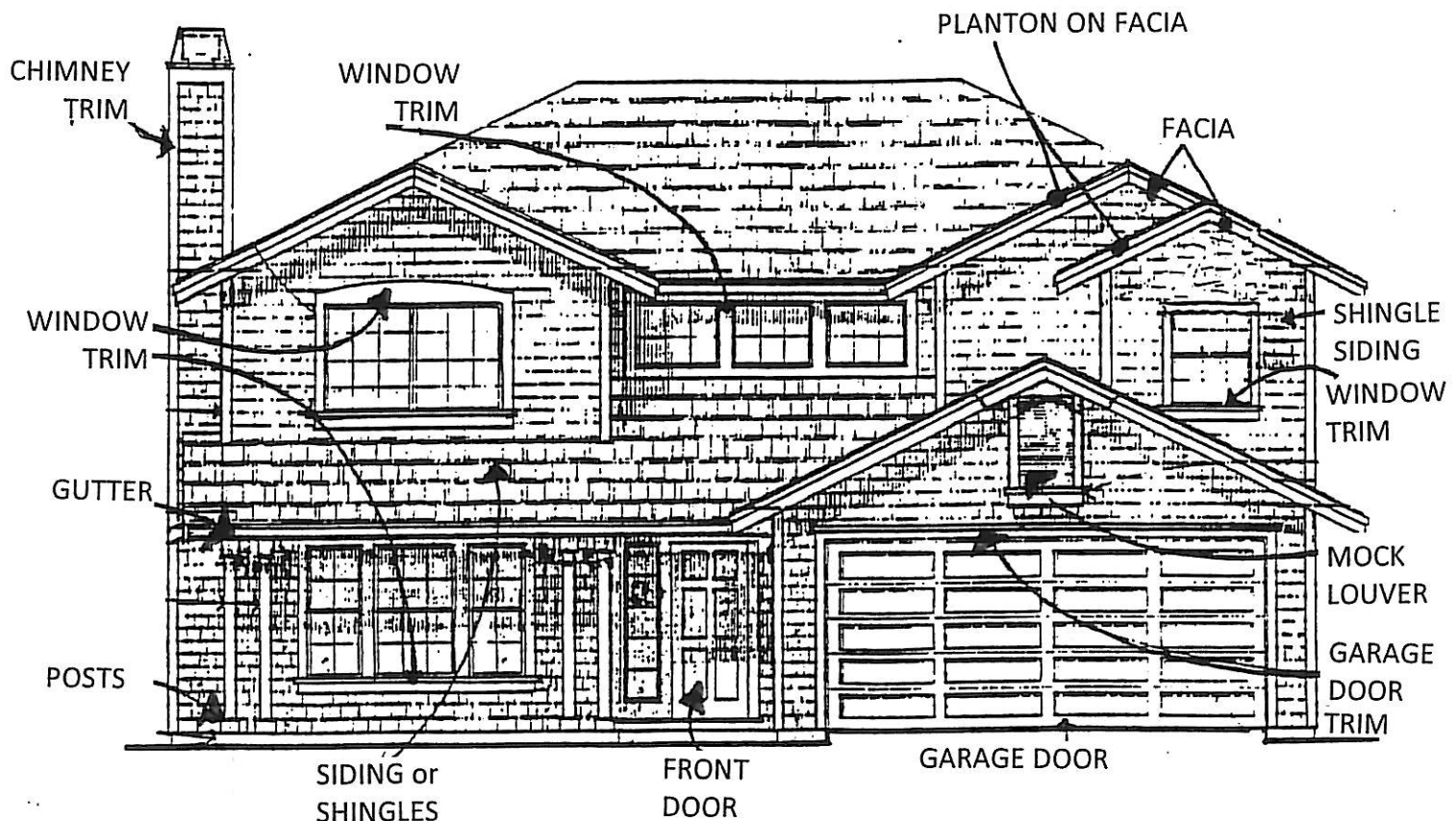
Power-wash house exterior to remove loose paint and dirt.

Caulk and prepare exterior, removing all chipped paint, and reset popped nails; sand the siding and trim, if necessary to create a smooth painting surface.

The primer paint coat, if used, should be oil-based - ask your painter for advice.

The paint coat can be either oil-based or latex (latex "breathes" and flexes better than oil paint) - ask your painter for advice.

Pipes, sheet metal vents, and other miscellaneous metal elements on the roof should be painted with a rust-retardant undercoat with a final paint coat in a color to match the roof color. Owners are urged to paint the raw metal of security alarm boxes (leaving only the decal area unpainted) to match the surface to which it is attached.



BAYVIEW HARBOR HOMES HOMEOWNERS' ASSOCIATION
GUIDELINES FOR EXTERIOR REPAINTING – AUGUST 2010

(Please provide a copy of these Rules to your painting contractor)

The Bayview Harbor Association Board of Directors approved a revised paint palette and authorized a new paint palette book from which Owners may select their house repainting color schemes. The new paint palette was prepared by Staff and reviewed by a professional color consultant. The new Kelly Moore paint colors are based on the original Olympic and Kelly Moore Developer colors and Dunn – Edwards color schemes added by the Board, **plus several new color schemes**. All of these new color schemes will enhance the visual character and color harmony of the Association.

Owners may use any brand of paint they wish provided the colors match the Kelly Moore colors. Most paint stores can custom-match the Kelly Moore colors

Owners must comply with the following repainting requirements:

1. Prior to commencing work, the Owner must submit an Architectural Application to the Community Architectural Committee, designating on the application form which color scheme and which colors will be used for each area on the house.
2. Color schemes may offer choices of trim and accent colors. **Owners may choose to use two or three colors from a color scheme on their dwellings, but not one color or more than three colors.** Except for front entry doors, flat or satin low-sheen finish paint shall be used.
3. The following categories of colors are defined for the various areas of your home as follows:

Siding: The largest surface of the home which includes the garage door. Garage doors shall be painted one color.

Trim: All original designated trim, such as front doors and door jambs adjacent to siding, dormer louvers, windows, gutters, and eaves shall be repainted in an approved trim color.

Highlight colors: Highlight colors are limited to front doors, mock louvers/ shutters, fascia strip (the 1 or 2 in accent strip under the roof edge.)
You may choose a shingle – siding stain and trim paint from the special palette approved for these houses.
4. Front entry doors, if painted, shall be painted with semi-gloss enamel. If stained, the semi-transparent stain shall be selected from the Association's approved door stain palette.
5. All vents, gutters, downspouts, diverters, meter boxes and utility doors shall be painted to match the adjacent color. Pipes and sheet metal vents that protrude through the roofing material color, as required by the Community Architectural Committee for all homes in Harbor Bay Isle.

6. Owners are required to paint the raw metal of security alarm boxes (leaving only the decal area unpainted) to match the surface to which it is attached. Security boxes should be painted if rust is evident.

If the owner's proposed color scheme is not based on the approved paint palette, a revised color scheme will be required. The Community Architectural Administrator will assist owners to successfully complete the review and approval process.

NO CHANGES PERMITTED UNLESS APPROVED: No changes shall be made in the color scheme after it has been approved unless the proposed changes are resubmitted to the Community Architectural committee for approval. **If you hire a contractor to paint your home please provide the contractor with a copy of your application approval letter and a copy of the attached house repainting rules.**

PAINT GLOSS CATEGORIES: Exterior paints are comprised of 5 gloss categories. The following exterior paint finishes are permitted under each category:

<u>Flat</u>	<u>Low sheen</u>	<u>Satin</u>	<u>Eggshell</u>	<u>Semi-gloss</u>	<u>Gloss</u>
Siding	Siding Trim	Siding Trim Accent Front door*	Trim Accent Front door*	Front door**	<u>NO</u> Exterior Use

** When painted front doors are permitted by a project association, **if specifically requested on your architectural application**, semi-gloss paint will be considered on a case-by-case basis.

SAMPLE ARCHITECTURAL AREAS OF A HOUSE. The following house design may not match your house's architectural details, but will identify the different areas of the house exterior details for painting.

SHINGLE-SIDED HOME COLOR SCHEMES:

CABOT SOLID COLOR STAIN:

1. Oak Brown
2. Cordovan Brown
3. Spanish Moss
4. Burnt Hickory
5. Bark
6. Sequoia
7. Canyon
8. Thatch
9. Black

KELLY MOORE TRIM:

- KM3996-2 Ferncliffe
- AC224-5 Red Raisan
- AC240-5 Zaire
- 417 Oxford Brown
- KM4006-3 Gold Promise
- KM4004-2 Star of the Garden
- KM3856-5 Moonless Sky
- KM3995-1 Skin Light
- KM4021-2 Swiss Cream

BAYVIEW HARBOR HOA

SCHEME 1

TRIM COLOR OPTIONS: *(pick one)*

Swiss Cream

KM4021-2

Angel Cloud

OW237-1

SIDING COLOR:

Oyster

26

ACCENT COLOR OPTIONS: *(pick one; optional)*

La Marina

157

Oxford Brown

417

Kelly-Moore paints are produced to match the color chip as accurately as possible; however, variations in types of products, gloss, texture, lighting and adjacent colors can cause a difference in appearance between the color of the chip and the color of the applied paint. Critical color matches should be applied to the building, allowed to dry, and checked before proceeding with the entire job.

BAYVIEW HARBOR HOA

SCHEME 2

TRIM COLOR OPTIONS: *(pick one)*

Stilwell Beige

KM4010-1

Oyster

26

SIDING COLOR:

Earthy Tan

KM4037-2

ACCENT COLOR OPTIONS: *(pick one; optional)*

Oxford Brown

417

Latte Please

KM4024-5

Kelly-Moore paints are produced to match the color chip as accurately as possible; however, variations in types of products, gloss, texture, lighting and adjacent colors can cause a difference in appearance between the color of the chip and the color of the applied paint. Critical color matches should be applied to the building, allowed to dry, and checked before proceeding with the entire job.

BAYVIEW HARBOR HOA

SCHEME 3

TRIM COLOR OPTIONS: (pick one)

Oyster

26

Barely Dawn

KM3978-1

SIDING COLOR:

Swiss Cream

KM4021-2

ACCENT COLOR OPTIONS: (pick one; optional)

Cranberry Craze

KM4200-5

Dig It

KM4023-3

Kelly-Moore paints are produced to match the color chip as accurately as possible; however, variations in types of products, gloss, texture, lighting and adjacent colors can cause a difference in appearance between the color of the chip and the color of the applied paint. Critical color matches should be applied to the building, allowed to dry, and checked before proceeding with the entire job.

BAYVIEW HARBOR HOA

SCHEME 4

TRIM COLOR OPTIONS: *(pick one)*

Winter Garden

KM3841-1

Angel Cloud

OW237-1

SIDING COLOR:

Gothic Grey

KM3837-2

ACCENT COLOR OPTIONS: *(pick one; optional)*

Carbon

407

Castlemare

KM3847-3

Kelly-Moore paints are produced to match the color chip as accurately as possible; however, variations in types of products, gloss, texture, lighting and adjacent colors can cause a difference in appearance between the color of the chip and the color of the applied paint. Critical color matches should be applied to the building, allowed to dry, and checked before proceeding with the entire job.

BAYVIEW HARBOR HOA

SCHEME 5

TRIM COLOR OPTIONS: *(pick one)*

Angel Cloud

OW237-1

Wishing Star

KM3914-1

SIDING COLOR:

Dillard

KM3915-1

ACCENT COLOR OPTIONS: *(pick one; optional)*

Gothic Grey

KM3837-2

Hanover Pewter

KM4259-3

Kelly-Moore paints are produced to match the color chip as accurately as possible; however, variations in types of products, gloss, texture, lighting and adjacent colors can cause a difference in appearance between the color of the chip and the color of the applied paint. Critical color matches should be applied to the building, allowed to dry, and checked before proceeding with the entire job.

BAYVIEW HARBOR HOA

SCHEME 6

TRIM COLOR OPTIONS: *(pick one)*

Ashford

KM3924-2

Dillard

KM3915-1

SIDING COLOR:

Angel Cloud

OW237-1

ACCENT COLOR OPTIONS: *(pick one; optional)*

Scatman Blue

HLS4265

Rock of Ages

KM3927-3

Kelly-Moore paints are produced to match the color chip as accurately as possible; however, variations in types of products, gloss, texture, lighting and adjacent colors can cause a difference in appearance between the color of the chip and the color of the applied paint. Critical color matches should be applied to the building, allowed to dry, and checked before proceeding with the entire job.

BAYVIEW HARBOR HOA

SCHEME 7

TRIM COLOR OPTIONS: (pick one)

Tumbled Stone

KM3939-1

Oyster

26

SIDING COLOR:

Angel Cloud

OW237-1

ACCENT COLOR OPTIONS: (pick one; optional)

Coffee Ole'

KM564-D

Limbert Leather

HL4217-3

Kelly-Moore paints are produced to match the color chip as accurately as possible; however, variations in types of products, gloss, texture, lighting and adjacent colors can cause a difference in appearance between the color of the chip and the color of the applied paint. Critical color matches should be applied to the building, allowed to dry, and checked before proceeding with the entire job.

BAYVIEW HARBOR HOA

SCHEME 8

TRIM COLOR OPTIONS: *(pick one)*

Angel Cloud
OW237-1

*(Serengeti Safari can be used as
trim or accent)*

Skin Light
KM3995-1

SIDING COLOR:

Pale Pollen
KM3492-2

ACCENT COLOR OPTIONS: *(pick one; optional)*

Carbon
407

Castle Dale
KM3935-3

Kelly-Moore paints are produced to match the color chip as accurately as possible; however, variations in types of products, gloss, texture, lighting and adjacent colors can cause a difference in appearance between the color of the chip and the color of the applied paint. Critical color matches should be applied to the building, allowed to dry, and checked before proceeding with the entire job.

BAYVIEW HARBOR HOA

SCHEME 9

TRIM COLOR OPTIONS: *(pick one)*

Angel Cloud

OW237-1

Swiss Cream

KM4021-2

SIDING COLOR:

Oyster

26

ACCENT COLOR OPTIONS: *(pick one; optional)*

Olympia Ivy

HL4226-5

Latte Please

KM4024-5

Kelly-Moore paints are produced to match the color chip as accurately as possible; however, variations in types of products, gloss, texture, lighting and adjacent colors can cause a difference in appearance between the color of the chip and the color of the applied paint. Critical color matches should be applied to the building, allowed to dry, and checked before proceeding with the entire job.

BAYVIEW HARBOR HOA

SCHEME 10

TRIM COLOR OPTIONS: *(pick one)*

Pale Ivory

KM3489-1

Bernard Beach

KM4013-2

SIDING COLOR:

French Sonnet

KM3490-1

ACCENT COLOR OPTIONS: *(pick one; optional)*

Cushy Suede

KM4022-2

Ladies Night

KM3904-5

Wild Planet

AC65-N

Kelly-Moore paints are produced to match the color chip as accurately as possible; however, variations in types of products, gloss, texture, lighting and adjacent colors can cause a difference in appearance between the color of the chip and the color of the applied paint. Critical color matches should be applied to the building, allowed to dry, and checked before proceeding with the entire job.

BAYVIEW HARBOR HOA

SCHEME 11

TRIM COLOR:

Frost

14

Nevada Peak

KM4188-2

SIDING COLOR:

Oyster

26

ACCENT COLOR OPTIONS:

(pick one; optional)

Crème de Caramel

KM3943-3

Red Hot Jazz

HLS4268

Kelly-Moore paints are produced to match the color chip as accurately as possible; however, variations in types of products, gloss, texture, lighting and adjacent colors can cause a difference in appearance between the color of the chip and the color of the applied paint. Critical color matches should be applied to the building, allowed to dry, and checked before proceeding with the entire job.

BAYVIEW HARBOR HOA

SCHEME 12

TRIM COLOR OPTIONS: *(pick one)*

Bernard Beach

KM4013-2

Angel Cloud

OW237-1

SIDING COLOR:

Movie Time

OW259-1

ACCENT COLOR OPTIONS: *(pick one; optional)*

Oxford Brown

417

Dig It

KM4023-3

Kelly-Moore paints are produced to match the color chip as accurately as possible; however, variations in types of products, gloss, texture, lighting and adjacent colors can cause a difference in appearance between the color of the chip and the color of the applied paint. Critical color matches should be applied to the building, allowed to dry, and checked before proceeding with the entire job.

BAYVIEW HARBOR HOA

SCHEME 13

TRIM COLOR OPTIONS: *(pick one)*

Creamy Natural

KM3962-1

*(Triangle Lodge can be used as
trim or accent)*

Cedar Shingle

KM3949-2

SIDING COLOR:

Meadow Brook

KM3948-2

ACCENT COLOR OPTIONS: *(pick one; optional)*

Wild Planet

AC65-N

Jillene Green

KM3863-3

Kelly-Moore paints are produced to match the color chip as accurately as possible; however, variations in types of products, gloss, texture, lighting and adjacent colors can cause a difference in appearance between the color of the chip and the color of the applied paint. Critical color matches should be applied to the building, allowed to dry, and checked before proceeding with the entire job.

BAYVIEW HARBOR HOA

SCHEME 14

TRIM COLOR OPTIONS: (pick one)

Angel Cloud
OW237-1

Bone
27

SIDING COLOR:

Glass House
KM3867-1

ACCENT COLOR OPTIONS: (pick one; optional)

Long View Garden
KM3870-3

Payton's Car
KM3869-2

Kelly-Moore paints are produced to match the color chip as accurately as possible; however, variations in types of products, gloss, texture, lighting and adjacent colors can cause a difference in appearance between the color of the chip and the color of the applied paint. Critical color matches should be applied to the building, allowed to dry, and checked before proceeding with the entire job.

BAYVIEW HARBOR HOA

SCHEME 15

TRIM COLOR OPTIONS: *(pick one)*

Tropical Straw

KM3987-1

Beach Bum

KM3964-1

SIDING COLOR:

Cloud of Cream

KM3993-1

ACCENT COLOR: *(optional)*

Olympia Ivy

HL4226-5

Head for the Beach

HL4226-5

Kelly-Moore paints are produced to match the color chip as accurately as possible; however, variations in types of products, gloss, texture, lighting and adjacent colors can cause a difference in appearance between the color of the chip and the color of the applied paint. Critical color matches should be applied to the building, allowed to dry, and checked before proceeding with the entire job.

BAYVIEW HARBOR HOA

SCHEME 16

TRIM COLOR OPTIONS: (pick one)

Angel Cloud

OW237-1

Cold Steel

KM3812-2

SIDING COLOR:

Burbank Aura

KM3842-1

ACCENT COLOR OPTIONS: (pick one; optional)

Kitty Kitty

KM3792-5

Iron Mountain

KM3830-3

Kelly-Moore paints are produced to match the color chip as accurately as possible; however, variations in types of products, gloss, texture, lighting and adjacent colors can cause a difference in appearance between the color of the chip and the color of the applied paint. Critical color matches should be applied to the building, allowed to dry, and checked before proceeding with the entire job.

BAYVIEW HARBOR HOA

SCHEME 17

TRIM COLOR OPTIONS: (pick one)

Angel Cloud

OW237-1

Rock Wall

KM3917-2

SIDING COLOR:

Sand Castle

KM3963-1

ACCENT COLOR OPTIONS: (pick one; optional)

Red Hot Jazz

HLS4268

Oxford Brown

417

Kelly-Moore paints are produced to match the color chip as accurately as possible; however, variations in types of products, gloss, texture, lighting and adjacent colors can cause a difference in appearance between the color of the chip and the color of the applied paint. Critical color matches should be applied to the building, allowed to dry, and checked before proceeding with the entire job.

BAYVIEW HARBOR HOA

SCHEME 18

TRIM COLOR OPTIONS: (pick one)

Angel Cloud

OW237-1

Plymouth Gray

178

SIDING COLOR:

Wishing Star

KM3914-1

ACCENT COLOR OPTIONS: (pick one; optional)

Made in the Shade

KM3790-3

Gothic Grey

KM3837-2

Kelly-Moore paints are produced to match the color chip as accurately as possible; however, variations in types of products, gloss, texture, lighting and adjacent colors can cause a difference in appearance between the color of the chip and the color of the applied paint. Critical color matches should be applied to the building, allowed to dry, and checked before proceeding with the entire job.

BAYVIEW HARBOR HOA

SCHEME 19

TRIM COLOR OPTIONS: *(pick one)*

Ashford

KM3924-2

Malibu Beige

216

SIDING COLOR:

Taravel

OW236-1

ACCENT COLOR OPTIONS: *(pick one; optional)*

Castlemare

KM3847-3

Scatman Blue

HL4265-3

Kelly-Moore paints are produced to match the color chip as accurately as possible; however, variations in types of products, gloss, texture, lighting and adjacent colors can cause a difference in appearance between the color of the chip and the color of the applied paint. Critical color matches should be applied to the building, allowed to dry, and checked before proceeding with the entire job.

BAYVIEW HARBOR HOA

SCHEME 20

TRIM COLOR OPTIONS: *(pick one)*

Graystone
230

Jute
KM3940-1

SIDING COLOR:

Pale Ivory
KM3489-1

ACCENT COLOR OPTIONS: *(pick one; optional)*

Swoosh
KM3168-5

Federalist
KM3806-2

Kelly-Moore paints are produced to match the color chip as accurately as possible; however, variations in types of products, gloss, texture, lighting and adjacent colors can cause a difference in appearance between the color of the chip and the color of the applied paint. Critical color matches should be applied to the building, allowed to dry, and checked before proceeding with the entire job.

BAYVIEW HARBOR HOA

SCHEME 21

TRIM COLOR OPTIONS: *(pick one)*

Ashford
KM3924-2

Frost
14

SIDING COLOR:

Thatch Reed
KM3947-1

ACCENT COLOR OPTIONS: *(pick one; optional)*

La Marina
157

Moonless Sky
KM3856-5

Kelly-Moore paints are produced to match the color chip as accurately as possible; however, variations in types of products, gloss, texture, lighting and adjacent colors can cause a difference in appearance between the color of the chip and the color of the applied paint. Critical color matches should be applied to the building, allowed to dry, and checked before proceeding with the entire job.

BAYVIEW HARBOR HOA

SCHEME 22

TRIM COLOR OPTIONS: *(pick one)*

Pale Ivory

KM3489-1

Homemade Biscuit

OW257-1

SIDING COLOR:

Wise Owl

42

ACCENT COLOR OPTIONS: *(pick one; optional)*

Bravado

160

Dark Glasses

AC256-5

Kelly-Moore paints are produced to match the color chip as accurately as possible; however, variations in types of products, gloss, texture, lighting and adjacent colors can cause a difference in appearance between the color of the chip and the color of the applied paint. Critical color matches should be applied to the building, allowed to dry, and checked before proceeding with the entire job.

BAYVIEW HARBOR HOA

SCHEME 23

TRIM COLOR OPTIONS: *(pick one)*

Patchy Fog

KM3826-1

Creamy Natural

KM3962-1

SIDING COLOR:

Pale Ivory

KM3489-1

ACCENT COLOR OPTIONS: *(pick one; optional)*

Castle Rock

KM3813-2

Green Thumb

149

Kelly-Moore paints are produced to match the color chip as accurately as possible; however, variations in types of products, gloss, texture, lighting and adjacent colors can cause a difference in appearance between the color of the chip and the color of the applied paint. Critical color matches should be applied to the building, allowed to dry, and checked before proceeding with the entire job.

BAYVIEW HARBOR HOA

SCHEME 24

TRIM COLOR OPTIONS: *(pick one)*

Stepping Stone

KM4189-2

Clippership Twill

HLS4276

SIDING COLOR:

Pufferbilly

KM578-L

ACCENT COLORS: *(optional)*

Red Raisin

AC224-5

Pools of Blue

KM3853-2

Kelly-Moore paints are produced to match the color chip as accurately as possible; however, variations in types of products, gloss, texture, lighting and adjacent colors can cause a difference in appearance between the color of the chip and the color of the applied paint. Critical color matches should be applied to the building, allowed to dry, and checked before proceeding with the entire job.

BAYVIEW HARBOR HOA

SCHEME 25

TRIM COLOR OPTIONS: *(pick one)*

Frost

14

Pale Ivory

KM3489-1

SIDING COLOR:

Trail Dust

HLS4273

ACCENT COLOR OPTIONS: *(pick one; optional)*

Green Thumb

149

Scatman Blue

HL4265-3

Kelly-Moore paints are produced to match the color chip as accurately as possible; however, variations in types of products, gloss, texture, lighting and adjacent colors can cause a difference in appearance between the color of the chip and the color of the applied paint. Critical color matches should be applied to the building, allowed to dry, and checked before proceeding with the entire job.

BAYVIEW HARBOR HOA

SCHEME 26

TRIM COLOR OPTIONS: *(pick one)*

Seattle

KM3923-1

Columbia

KM3921-1

SIDING COLOR:

Patchy Fog

KM3826-1

ACCENT COLOR OPTIONS: *(pick one; optional)*

Slippery Shale

KM3845-2

Bravado

160

Kelly-Moore paints are produced to match the color chip as accurately as possible; however, variations in types of products, gloss, texture, lighting and adjacent colors can cause a difference in appearance between the color of the chip and the color of the applied paint. Critical color matches should be applied to the building, allowed to dry, and checked before proceeding with the entire job.

BAYVIEW HARBOR HOA

SCHEME 27

TRIM COLOR OPTIONS: *(pick one)*

Swiss Cream

KM4021-2

Pale Ivory

KM3489-1

SIDING COLOR:

Spanish Sand

231

ACCENT COLOR OPTIONS: *(pick one; optional)*

Westover Hills

KM3973-2

Tumble Tan

KM4014-3

Kelly-Moore paints are produced to match the color chip as accurately as possible; however, variations in types of products, gloss, texture, lighting and adjacent colors can cause a difference in appearance between the color of the chip and the color of the applied paint. Critical color matches should be applied to the building, allowed to dry, and checked before proceeding with the entire job.

BAYVIEW HARBOR HOA

SCHEME 28

TRIM COLOR OPTIONS: *(pick one)*

Earth Stone

KM3972-2

Graystone

230

SIDING COLOR:

Movie Time

OW259-1

ACCENT COLOR OPTIONS: *(pick one; optional)*

Cranberry Craze

KM4200-5

Tropical Tan

KM3942-2

Kelly-Moore paints are produced to match the color chip as accurately as possible; however, variations in types of products, gloss, texture, lighting and adjacent colors can cause a difference in appearance between the color of the chip and the color of the applied paint. Critical color matches should be applied to the building, allowed to dry, and checked before proceeding with the entire job.

BAYVIEW HARBOR HOA

SCHEME 29

TRIM COLOR OPTIONS: *(pick one)*

Frost

14

Movie Time

OW259-1

SIDING COLOR:

Tropical Straw

KM3987-1

ACCENT COLOR OPTIONS: *(pick one; optional)*

Zaire

AC240-5

Caramel Mountain

KM4015-3

Kelly-Moore paints are produced to match the color chip as accurately as possible; however, variations in types of products, gloss, texture, lighting and adjacent colors can cause a difference in appearance between the color of the chip and the color of the applied paint. Critical color matches should be applied to the building, allowed to dry, and checked before proceeding with the entire job.

BAYVIEW HARBOR HOA

SCHEME 30

TRIM COLOR OPTIONS: (pick one)

Columbia

KM3921-1

Federalist

KM3806-2

SIDING COLOR:

New Linen

29

ACCENT COLOR OPTIONS: (pick one; optional)

Five O'clock Shadow

KM3783-3

In The Dark

KM3784-5

Kelly-Moore paints are produced to match the color chip as accurately as possible; however, variations in types of products, gloss, texture, lighting and adjacent colors can cause a difference in appearance between the color of the chip and the color of the applied paint. Critical color matches should be applied to the building, allowed to dry, and checked before proceeding with the entire job.

BAYVIEW HARBOR HOA

SCHEME 31

TRIM COLOR OPTIONS: (pick one)

Frost

14

Angel Cloud

OW237-1

SIDING COLOR:

Grand Bay

KM3804-1

ACCENT COLOR OPTIONS: (pick one; optional)

Scatman Blue

HLS4265

Del Sol Maize

HLS4220

Kelly-Moore paints are produced to match the color chip as accurately as possible; however, variations in types of products, gloss, texture, lighting and adjacent colors can cause a difference in appearance between the color of the chip and the color of the applied paint. Critical color matches should be applied to the building, allowed to dry, and checked before proceeding with the entire job.

BAYVIEW HARBOR HOA

SCHEME 32

TRIM COLOR OPTIONS: *(pick one)*

Jute

KM3940-1

Tropical Tan

KM3942-2

SIDING COLOR:

Bone

27

ACCENT COLOR OPTIONS: *(pick one; optional)*

Rockvale

KM3950-3

Dark Glasses

AC256-5

Kelly-Moore paints are produced to match the color chip as accurately as possible; however, variations in types of products, gloss, texture, lighting and adjacent colors can cause a difference in appearance between the color of the chip and the color of the applied paint. Critical color matches should be applied to the building, allowed to dry, and checked before proceeding with the entire job.

BAYVIEW HARBOR HOA

SCHEME 33

TRIM COLOR OPTIONS: *(pick one)*

Meadow Day

KM3970-1

Gettysburg Gray

HLS4262

SIDING COLOR:

Tropical Tan

KM3942-2

ACCENT COLOR OPTIONS: *(pick one; optional)*

Victoria Red

HLS4234

Castledale

KM3935-3

Kelly-Moore paints are produced to match the color chip as accurately as possible; however, variations in types of products, gloss, texture, lighting and adjacent colors can cause a difference in appearance between the color of the chip and the color of the applied paint. Critical color matches should be applied to the building, allowed to dry, and checked before proceeding with the entire job.

BAYVIEW HARBOR HOA

SCHEME 34

TRIM COLOR OPTIONS: *(pick one)*

Angel Cloud

OW237-1

Whispering Smoke

KM3825-1

SIDING COLOR:

Rain Nation

KM3811-1

ACCENT COLOR OPTIONS: *(pick one; optional)*

Federalist

KM3806-2

Knapped Flint

KM3831-3

Kelly-Moore paints are produced to match the color chip as accurately as possible; however, variations in types of products, gloss, texture, lighting and adjacent colors can cause a difference in appearance between the color of the chip and the color of the applied paint. Critical color matches should be applied to the building, allowed to dry, and checked before proceeding with the entire job.

BAYVIEW HARBOR HOA

SCHEME 35

TRIM COLOR OPTIONS: *(pick one)*

Angel Cloud

OW237-1

Whispering Smoke

KM3825-1

SIDING COLOR:

Hi Ho Silver

KM3843-1

ACCENT COLOR OPTIONS: *(pick one; optional)*

Castle Rock

KM3813-2

Indian Red

HLS4293

Kelly-Moore paints are produced to match the color chip as accurately as possible; however, variations in types of products, gloss, texture, lighting and adjacent colors can cause a difference in appearance between the color of the chip and the color of the applied paint. Critical color matches should be applied to the building, allowed to dry, and checked before proceeding with the entire job.

BAYVIEW HARBOR HOA

SCHEME 36

TRIM COLOR OPTIONS: *(pick one)*

Chapelle Tint

KM4178-1

Beige Rage

KM4187-1

SIDING COLOR:

Stepping Stone

K4189-2

ACCENT COLOR OPTIONS: *(pick one; optional)*

Mocha

KM4190-3

Raw Earth

KM4192-5

Kelly-Moore paints are produced to match the color chip as accurately as possible; however, variations in types of products, gloss, texture, lighting and adjacent colors can cause a difference in appearance between the color of the chip and the color of the applied paint. Critical color matches should be applied to the building, allowed to dry, and checked before proceeding with the entire job.

BAYVIEW HARBOR HOA

SCHEME 37

TRIM COLOR OPTIONS: *(pick one)*

White Dove

32

Nevada Peak

KM4188-2

SIDING COLOR:

Beige Rage

KM4187-1

ACCENT COLOR OPTIONS: *(pick one; optional)*

Muddy Creek

KM702-D

Pale Palamino

KM4110-3

Kelly-Moore paints are produced to match the color chip as accurately as possible; however, variations in types of products, gloss, texture, lighting and adjacent colors can cause a difference in appearance between the color of the chip and the color of the applied paint. Critical color matches should be applied to the building, allowed to dry, and checked before proceeding with the entire job.

BAYVIEW HARBOR HOA

SCHEME 38

TRIM COLOR OPTIONS: *(pick one)*

Tumble Tan

KM4014-3

Carmel Candy

KM4016-5

SIDING COLOR:

Oyster

26

ACCENT COLOR OPTIONS: *(pick one; optional)*

Chamois Shirt

KM4063-3

Charlestone Chocolate

HLS4244

Kelly-Moore paints are produced to match the color chip as accurately as possible; however, variations in types of products, gloss, texture, lighting and adjacent colors can cause a difference in appearance between the color of the chip and the color of the applied paint. Critical color matches should be applied to the building, allowed to dry, and checked before proceeding with the entire job.

BAYVIEW HARBOR HOA

SCHEME 39

TRIM COLOR OPTIONS: *(pick one)*

Cloud of Cream

KM3993-1

Swing Sage

HLS4298

SIDING COLOR:

Tropical Straw

KM3987-1

ACCENT COLOR OPTIONS: *(pick one; optional)*

Inglenook Olive

HLS4294

Woven Willow

KM3968-5

Kelly-Moore paints are produced to match the color chip as accurately as possible; however, variations in types of products, gloss, texture, lighting and adjacent colors can cause a difference in appearance between the color of the chip and the color of the applied paint. Critical color matches should be applied to the building, allowed to dry, and checked before proceeding with the entire job.

BAYVIEW HARBOR HOA

SCHEME 40

TRIM COLOR OPTIONS: *(pick one)*

Wild Oaks

KM3945-1

Columbia

KM3921-1

SIDING COLOR:

Maddy's Mood

KM3789-2

ACCENT COLOR OPTIONS: *(pick one; optional)*

Dark Berry

KM3768-5

Made in the Shade

KM3790-3

Kelly-Moore paints are produced to match the color chip as accurately as possible; however, variations in types of products, gloss, texture, lighting and adjacent colors can cause a difference in appearance between the color of the chip and the color of the applied paint. Critical color matches should be applied to the building, allowed to dry, and checked before proceeding with the entire job.

BAYVIEW HARBOR HOA

SCHEME 41

TRIM COLOR OPTIONS: *(pick one)*

Graystone

230

Bone

27

SIDING COLOR:

Movie Time

OW259-1

ACCENT COLOR OPTIONS: *(pick one; optional)*

Butterscotch Sundae

HLS4255

Eastlake Lavender

HLS4246

Kelly-Moore paints are produced to match the color chip as accurately as possible; however, variations in types of products, gloss, texture, lighting and adjacent colors can cause a difference in appearance between the color of the chip and the color of the applied paint. Critical color matches should be applied to the building, allowed to dry, and checked before proceeding with the entire job.

BAYVIEW HARBOR HOA

SCHEME 42

TRIM:

Washed Khaki

KM4012-2

SIDING COLOR:

Indian Red

HLS4293

Kelly-Moore paints are produced to match the color chip as accurately as possible; however, variations in types of products, gloss, texture, lighting and adjacent colors can cause a difference in appearance between the color of the chip and the color of the applied paint. Critical color matches should be applied to the building, allowed to dry, and checked before proceeding with the entire job.

BAYVIEW HARBOR HOA

SCHEME 43

TRIM:

Swiss Coffee

23

SIDING COLOR:

Blue Suede Shoes

KM3159-3

Kelly-Moore paints are produced to match the color chip as accurately as possible; however, variations in types of products, gloss, texture, lighting and adjacent colors can cause a difference in appearance between the color of the chip and the color of the applied paint. Critical color matches should be applied to the building, allowed to dry, and checked before proceeding with the entire job.

BAYVIEW HARBOR HOA

SCHEME 44

TRIM:

Woven Willow

KM3968-5

SIDING COLOR:

Inglenook Olive

HLS4294

ACCENT:

Pale Palamino

KM4110-3

Kelly-Moore paints are produced to match the color chip as accurately as possible; however, variations in types of products, gloss, texture, lighting and adjacent colors can cause a difference in appearance between the color of the chip and the color of the applied paint. Critical color matches should be applied to the building, allowed to dry, and checked before proceeding with the entire job.

COLOR SCHEMES FOR HOUSES WITH WOOD SHINGLE SIDING

CABOT SIDING STAIN:

Oak Brown



Cordovan Brown



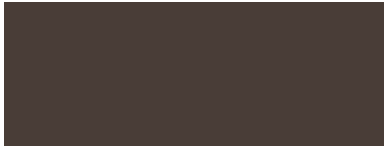
Spanish Moss



Burnt Hickory



Bark



Sequoia



Canyon



Thatch



Black



KELLY-MOORE TRIM COLOR:

KM3996-2
Ferncliffe



AC224-5
Red Raisin



AC240-5
Zaire



417
Oxford Brown



KM4006-3
Gold Promise



KM4004-2
Star of the Garden



KM3856-5
Moonless Sky



KM3995-1
Skin Light



KM4021-2
Swiss Coffee



Kelly-Moore paints are produced to match the color chip as accurately as possible; however, variations in types of products, gloss, texture, lighting and adjacent colors can cause a difference in appearance between the color of the chip and the color of the applied paint. Critical color matches should be applied to the building, allowed to dry, and checked before proceeding with the entire job.