

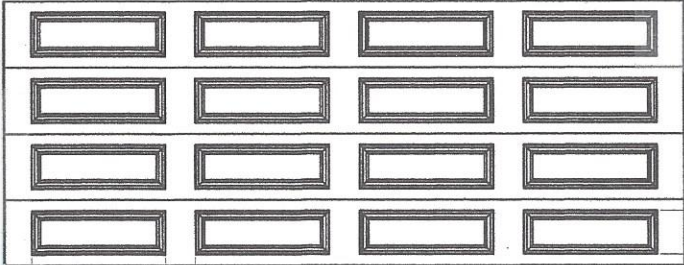
EXHIBIT "B"

Garage Doors

Replacement Doors

Garage replacement doors may be wood or metal sectional overhead doors of the same size as the original door. Standard garage doors are insulated raised-panel metal doors with 16 panels. For other approved garage door styles Refer to Exhibit "B-1" – Garage Door Alternate Styles.

- Metal garage doors shall have a wood-textured finish.
- Doors must be painted with the same paint as the house to exactly match the siding or trim color and sheen. All garage door *factory finish* coatings must be painted.
- Two-color garage doors are not permitted.

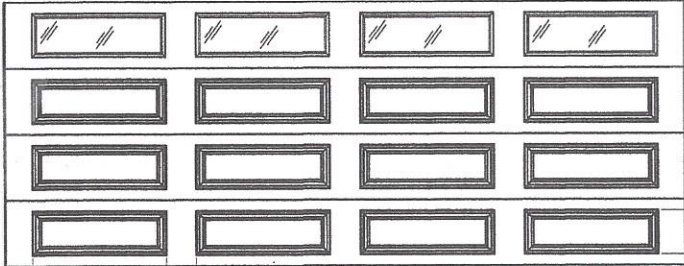


Standard Garage Door

Garage Doors with Windows

Garage doors may have windows subject to the following limitations:

- Windows must be located across the top row of door panels, four panels across.
- Windows shall be one piece of glass without divided panes.
- Glass shall be frosted or obscure glass without color.



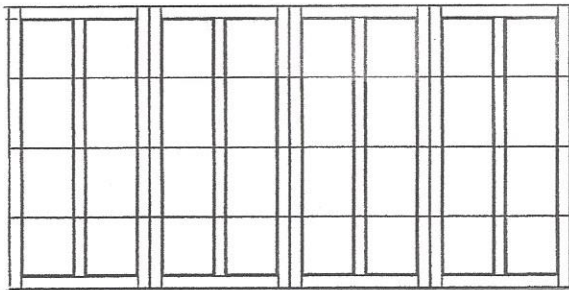
Standard Garage Door with Windows

EXHIBIT "B-1"

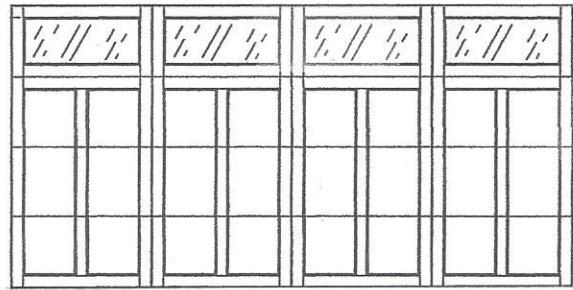
Garage Door Alternate Styles

General Requirements

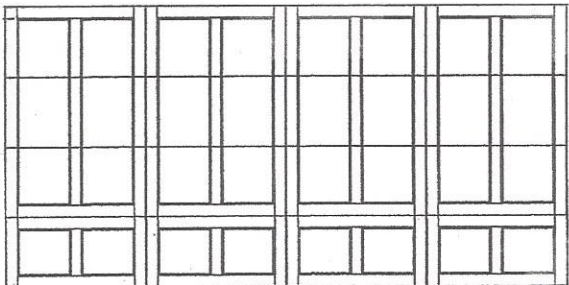
The alternate garage door styles shown are manufactured by Clopay garage doors and are selected from the 'Coachman Collection'. Similar door styles and configurations may be selected from other garage door manufacturers. Decorative black-finish door handles and hinges that mimic "carriage house" styles are not allowed on exterior garage door surfaces.



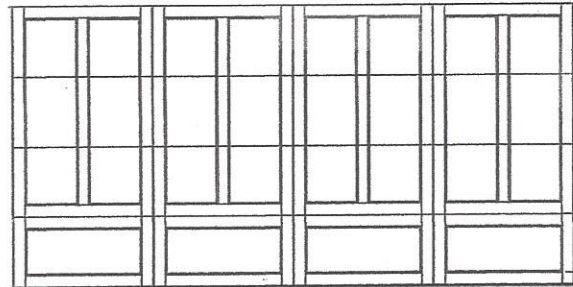
1



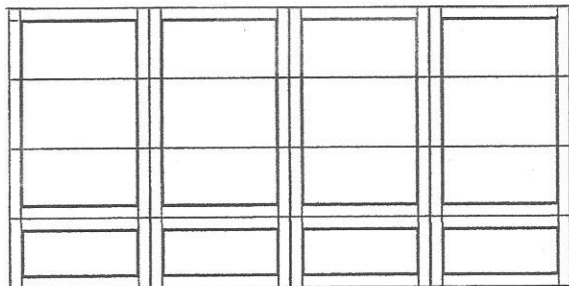
2



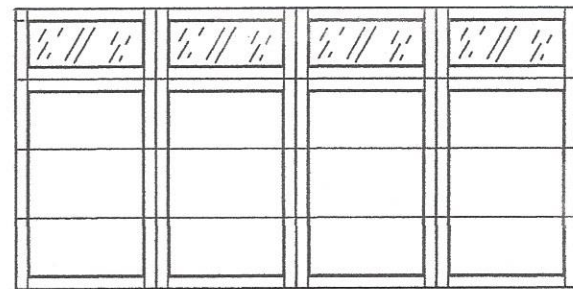
3



4



5



6