

**RESOLUTION
OF THE BOARD OF DIRECTORS
LANTERN BAY HOMEOWNERS' ASSOCIATION**

ARCHITECTURAL GUIDELINES FOR GARAGE DOORS

WHEREAS, the Board of Directors for the Lantern Bay Homeowners' Association is committed to maintaining property value and a common code of conduct and order throughout the Association; and

WHEREAS, a common code of conduct and order requires establishing and distributing rule, regulations and guidelines; and

WHEREAS, the Association's Covenants, Conditions and Restrictions empower the Board of Directors to adopt Rules, Regulations and Guidelines for the orderly governance and good of all members; and

THEREFORE, LET IT BE RESOLVED, that Homeowners use the following guidelines for replacing garage doors:

**LANTERN BAY HOMEOWNERS' ASSOCIATION
GUIDELINES FOR REPLACING GARAGE DOORS**

Prior to commencing work, owners must submit an Architectural Application to the Community listing a proposed garage door replacement and all necessary documents required for submittal.

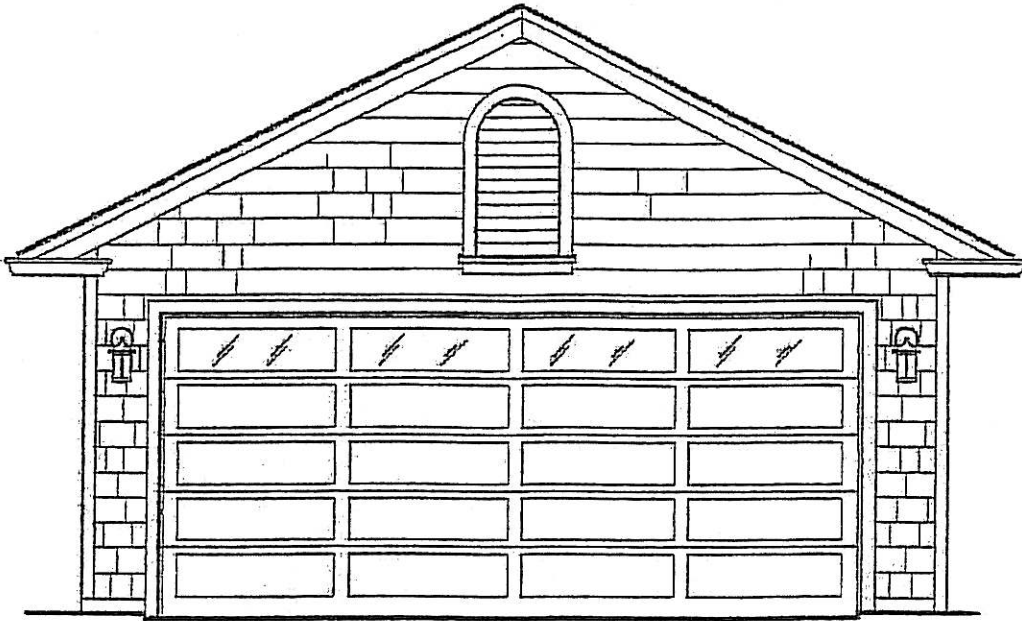
Your Architectural Application must be approved by the Lantern Bay Architectural Committee (PAC) and the Community of Harbor Bay Isle Architectural Committee (CAC) before replacing your garage. A letter of approval will be sent to you in approximately two weeks. After approval of your application, you have up to 12 months to replace your garage door. After that time, if your garage has not been replaced, the application will become void.

Garage Doors must match the developer-installed door in design. The door color shall match the house siding or trim color. Two-color doors are not permitted. Roll-up door that is solid form or a wood-grain metal door is permitted. If windows are installed, windows must have opaque glass, and are limited to options A & B, see exhibit A. Property owners are responsible for assuring garage door replacements meet the safety requirements mandated by the State of California statutes.

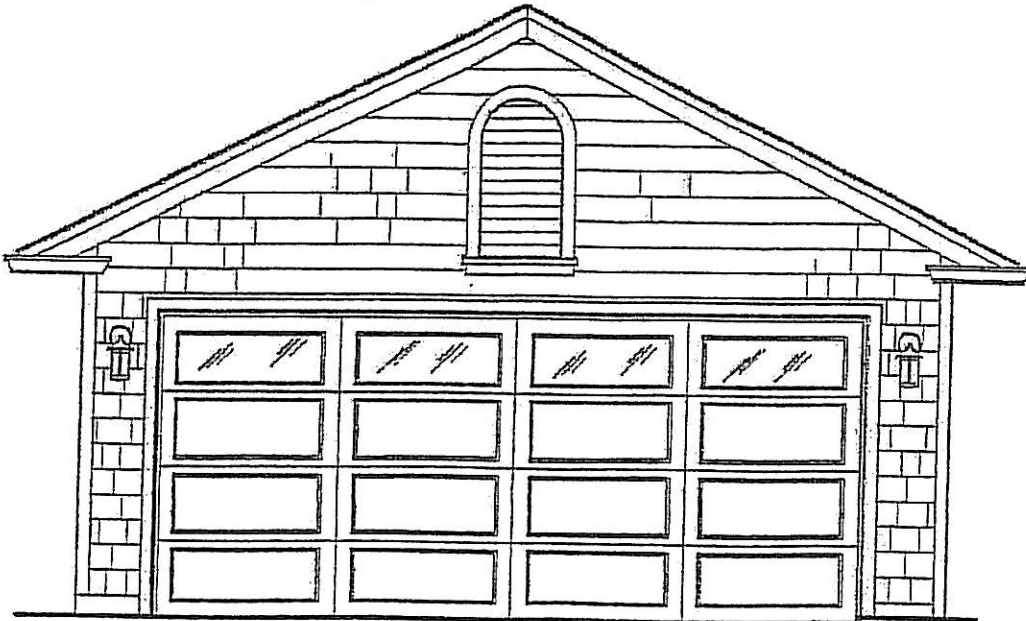
This Resolution is adopted and made part of the minutes of the membership meeting on November 19, 2009.

EXHIBIT A

LANTERN BAY GARAGE DOOR OPTION A & B



OPTION A



OPTION B