

FREEPORT

Locking Mailboxes

Solar Group WM16KB01 Large Lockable Decorative Mailbox in black by Gibraltar

When replacing the mailbox with a locking mailbox, this is the only locking mailbox allowed. You must submit an architectural application if you plan to replace your mailbox.

Brand: Gibraltar

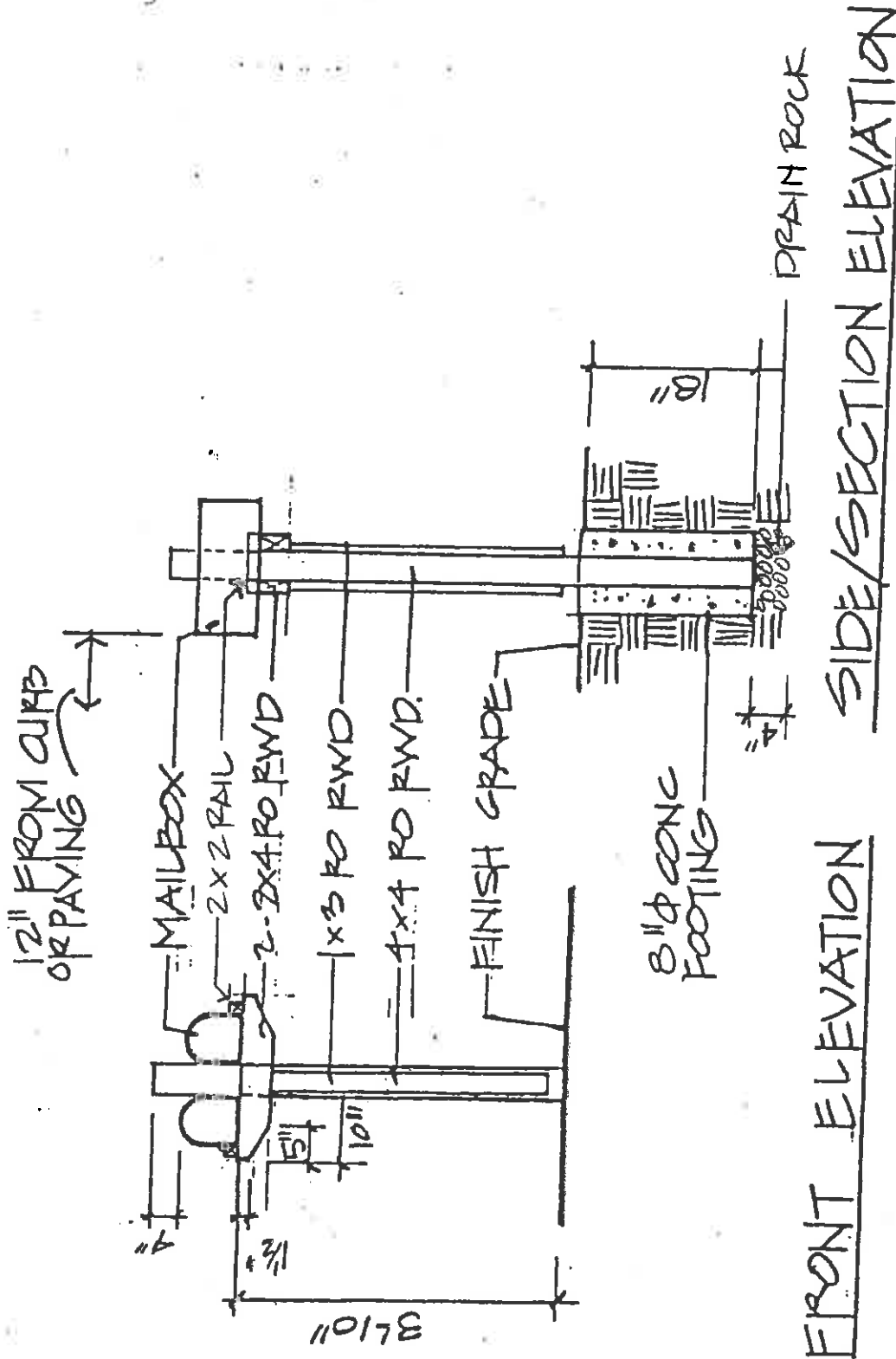
Model: Solar Group WM16KB01



- Dimensions: 22.2 x 10.8 x 11 inches
- Color: Black



Freeport Homeowners' Association
 3195 Mecartney Road • Alameda, CA 94502
 (510) 865-3363 • Fax (510) 522-1436



FRONT ELEVATION SIDE/SECTION ELEVATION

NOTES:

1. ALL WOOD SHALL BE ROUGH CONSTRUCTION HEART REDWOOD
2. MAIL BOXES SHALL BE APPROXIMATELY 6 1/2" WIDE BY 8 1/2" HIGH BY 19" LONG AND BE APPROVED BY THE U.S. POSTAL SERVICE.
3. ALL NAILS SHALL BE 16d HOT DIPPED GALVANIZED.
4. ALL MAIL BOXES SHALL HAVE FLAGS
5. CONTRACTOR SHALL VERIFY LOCATION OF UTILITIES PRIOR TO INSTALLATION OF MAILBOX UNITS. MAKE NECESSARY FIELD ADJUSTMENT AS DIRECTED BY OWNERS' REPRESENTATIVE.
6. TREES SHALL BE PLANTED 5' MINIMUM FROM MAILBOX UNIT.
7. EPOXY MAILBOX TO SUPPORTS